



Southport College | School Leaver Prospectus | 2021

**Get on  
course**

**for success**

Get on course

**A place for every school leaver**

**Get on course**

Southport College is a great place to study and we have the best overall achievement rate for 16-18s of any Further Education College in Merseyside.

# Find your perfect course at Southport College



## Contents

Get on  
course

Course Listings .....	6	Construction Surveying & Architecture .....	70
Michelle Brabner - Principal CEO .....	8	Creative Media Production & Photography .....	72
Reasons to choose Southport College .....	10	Photography Competition .....	78
Vocational qualifications .....	12	Electrical Installation .....	80
Open events & applying to Southport College .....	14	Engineering .....	82
Facilities at Southport College .....	16	Forensic & Criminal Investigation .....	84
Student Information Centre .....	20	Games Design .....	86
Learning Support .....	21	Graphic Design .....	90
Student Enrichment .....	22	Hairdressing .....	94
English and maths .....	26	Hair & Beauty Competition .....	96
Awards Events .....	28	Health & Social Care .....	98
Student Destinations .....	30	Hospitality .....	100
Student Success .....	32	Professional Cookery .....	102
Apprenticeships .....	38	Guest Chef nights .....	104
Traineeships .....	40	Clouds Restaurant .....	106
Find your level .....	42	Motor Vehicle Engineering .....	108
Industry links .....	44	Painting & Decorating .....	110
I'm on course .....	47	Performing Arts .....	112
Art & Design .....	48	Plumbing .....	116
Art and Design .....	50	Sport .....	118
Beauty .....	54	Sport - Enrichment .....	120
Nails .....	56	Travel & Tourism .....	122
Concept Salons - Hair & Beauty .....	58	We're on course .....	125
Bricklaying .....	60	Connect .....	126
Building Services Engineering .....	62	Aspire .....	128
Business .....	64	Ambition .....	130
Childcare .....	66	Getting it right .....	132
Computing & IT .....	68	Getting to the College .....	134



# Course Listings

A quick guide to all our school leaver courses and their entry requirements. You will find more detailed information on each of the course pages.

Get on course

Course	Level	Entry Requirements
<b>Ambition</b>		
Creative Design	Level 1 (Ambition)	Minimum 1 GCSE at grade 3 (D), 2 GCSEs at grade 2 (F) and English and maths at grade 1
Hairdressing & Beauty Therapy	Level 1 (Ambition)	Minimum 1 GCSE at grade 3 (D), 2 GCSEs at grade 2 (F) and English and maths at grade 1
Health & Social Care	Level 1 (Ambition)	Minimum 1 GCSE at grade 3 (D), 2 GCSEs at grade 2 (F) and English and maths at grade 1
Painting & Decorating	Level 1 (Ambition)	Minimum 1 GCSE at grade 3 (D), 2 GCSEs at grade 2 (F) and English and maths at grade 1
<b>Art &amp; Design</b>		
Art & Design	Level 2	Minimum 1 GCSE at grade 4 and 2 GCSEs at grade 3 (D) including English and maths
Art & Design	Level 3 Ext Dip	5 GCSEs at grade 9-4 (A*- C) including maths and/or English
<b>Aspire</b>		
Aspire	Entry Level 3	Successful course discussion, assessment
<b>Beauty</b>		
Beauty Therapy	Level 2	Minimum 1 GCSE at grade 4 and 2 GCSEs at grade 3 (D) including English and maths
Nail Services	Level 2	Minimum 1 GCSE at grade 4 and 2 GCSEs at grade 3 (D) including English and maths
Beauty Therapy	Level 3	Pass at Level 2 in a related subject and a minimum grade 4 in maths and/or English
<b>Bricklaying</b>		
Bricklaying	Level 1	3 GCSEs at grade 3 (E) and English and maths at grade 2
Bricklaying	Level 2	Minimum 1 GCSE at grade 4 and 2 GCSEs at grade 3 (D) including English and maths
Bricklaying	Level 3	Pass at Level 2 in a related subject and a minimum grade 4 in maths and/or English
<b>Building Services Engineering</b>		
Access to Building Services Engineering	Level 2	Minimum 1 GCSE at grade 4 and 2 GCSEs at grade 3 (D) including English and maths
<b>Business</b>		
Retail	Level 1	Minimum 1 GCSE at grade 3 (D), 2 GCSEs at grade 2 (F) and English and maths at grade 1
Business Administration	Level 2	Minimum 1 GCSE at grade 4 and 2 GCSEs at grade 3 (D) including English and maths
<b>Childcare</b>		
Childcare	Level 1	Minimum 1 GCSE at grade 3 (D), 2 GCSEs at grade 2 (F) and English and maths at grade 1
Intro to Early Years Education	Level 2	Minimum 3 GCSEs at grade 3 (D) including English and maths
The Early Years Educator	Level 3	5 GCSEs at grade 9-4 (A*- C) including maths and/or English
<b>Computing &amp; ICT</b>		
ICT	Level 2	Minimum 1 GCSE at grade 4 and 2 GCSEs at grade 3 (D) including English and maths
Computer Science & Technology	Level 3 Ext Dip	5 GCSEs at grade 9-4 (A*- C) including maths and/or English
<b>Connect</b>		
Connect	Entry Level 1 & 2	Successful course discussion, assessment and taster session
<b>Construction, Surveying &amp; Architecture</b>		
Construction, Surveying & Architecture	Level 3 Ext Dip	5 GCSEs at grade 9-4 (A*- C) including maths and/or English
<b>Creative Media Production</b>		
Creative Media Production & Technology	Level 2	Minimum 1 GCSE at grade 4 and 2 GCSEs at grade 3 (D) including English and maths
Creative Media Production	Level 3 Ext Dip	5 GCSEs at grade 9-4 (A*- C) including maths and/or English
<b>Electrical Installation</b>		
Electrical Installation	Level 2	Minimum 2 GCSEs at grade 3 (D) including English and grade 9-4 (A*-C) in maths
Electrical Installation	Level 3	Pass at Level 2 Electrical Installation and a minimum grade 4 in maths
<b>Engineering</b>		
Engineering	Level 2	Minimum 1 GCSE at grade 4 and 2 GCSEs at grade 3 (D) including English and maths
Engineering	Level 3 Ext Dip	5 GCSEs at grade 9-4 (A*- C) including maths and/or English

Course	Level	Entry Requirements
<b>Forensic &amp; Criminal Investigation</b>		
Forensic & Criminal Investigation	Level 3 Ext Dip	5 GCSEs at grade 9-4 (A*- C) including maths and/or English and GCSE Science grade A*-C (9-4)
<b>Games Design</b>		
Games Design	Level 3 Ext Dip	5 GCSEs at grade 9-4 (A*- C) including maths and/or English
<b>Graphic Design &amp; Illustration</b>		
Graphic Design	Level 3 Ext Dip	5 GCSEs at grade 9-4 (A*- C) including maths and/or English
<b>Hairdressing</b>		
Hairdressing	Level 2	Minimum 1 GCSE at grade 4 and 2 GCSEs at grade 3 (D) including English and maths
<b>Health &amp; Social Care</b>		
Health & Social Care	Level 2	Minimum 1 GCSE at grade 4 and 2 GCSEs at grade 3 (D) including English and maths
Health & Social Care	Level 3 Ext Dip	5 GCSEs at grade 9-4 (A*- C) including maths and/or English
Health & Social Care Acorn Pathway		5 GCSEs at grade 9-4 (A*- C) including English and maths and you will also need a second interview with NHS staff
<b>Hospitality &amp; Catering</b>		
Intro to the Hospitality Industry	Level 1	3 GCSEs at grade 3 (E) and English and maths at grade 2
Professional Food & Beverage Service	Level 2	Minimum 1 GCSE at grade 4 and 2 GCSEs at grade 3 (D) including English and maths
Supervision of Food & Beverage Service	Level 3	Pass at Level 2 in related subject and minimum grade 4 in maths and/or English
<b>Motor Vehicle Engineering</b>		
Motor Vehicle Maintenance	Level 1	Minimum 1 GCSE at grade 3 (D), 2 GCSEs at grade 2 (F) and English and maths at grade 1
Light Vehicle Maintenance	Level 1	3 GCSEs at grade 3 (E) and English and maths at grade 2
Vehicle Maintenance & Repair	Level 2	Full Level 1 Diploma in Vehicle Maintenance and English and maths at grade 3
Vehicle Maintenance & Repair	Level 3	Pass at Level 2 or equivalent and minimum grade 4 in maths and/or English
<b>Painting &amp; Decorating</b>		
Painting & Decorating	Level 2	Minimum 1 GCSE at grade 4 and 2 GCSEs at grade 3 (D) including English and maths
Painting & Decorating	Level 3	Pass at Level 2 in related subject and minimum grade 4 in maths and/or English
<b>Performing Arts</b>		
Performing Arts	Level 2	Minimum 1 GCSE at grade 4 and 2 GCSEs at grade 3 (D) including English and maths
Performing Arts	Level 3 Ext Dip	5 GCSEs at grade 9-4 (A*- C) including maths and/or English
<b>Photography</b>		
Photography	Level 3 Ext Dip	5 GCSEs at grade 9-4 (A*- C) including maths and/or English
<b>Plumbing</b>		
Plumbing	Level 1	Minimum 1 GCSE at grade 3 (D), 2 GCSEs at grade 2 (F) and English and maths at grade 1
Plumbing	Level 2	Minimum 1 GCSE at grade 4 including Science and 2 GCSEs at grade 3 (D) including English and maths
<b>Professional Cookery</b>		
Professional Cookery	Level 1	3 GCSEs at grade 3 (E) and English and maths at grade 2
Professional Cookery	Level 2	Minimum 1 GCSE at grade 4 and 2 GCSEs at grade 3 (D) including English and maths
Professional Cookery	Level 3	Pass at Level 2 in related subject and minimum grade 4 in maths and/or English
Professional Patisserie & Confectionery	Level 3	Pass at Level 2 in related subject and minimum grade 4 in maths and/or English
<b>Sport</b>		
Sport	Level 1	Minimum 1 GCSE at grade 3 (D), 2 GCSEs at grade 2 (F) and English and maths at grade 1
Sport	Level 1	3 GCSEs at grade 3 (E) and English and maths at grade 2
Sports and Activity Leaders	Level 2	Minimum 1 GCSE at grade 4 and 2 GCSEs at grade 3 (D) including English and maths
<b>Travel &amp; Tourism</b>		
Travel & Tourism	Level 2	Minimum 1 GCSE at grade 4 and 2 GCSEs at grade 3 (D) including English and maths
Travel & Tourism	Level 3 Ext Dip	5 GCSEs at grade 9-4 (A*- C) including maths and/or English





## Michelle Brabner – Principal CEO

I am delighted to introduce you to the prospectus for Southport College. Having recently joined the College as Principal CEO, I am very excited to now be able to play a key role in further developing the fantastic opportunities Southport College can offer you both on your course and in your wider activities at the College.

Our aim is to prepare you for your chosen career, next steps in education and long term aspirations. At our spacious, town centre location, we offer excellent teaching from industry-experienced tutors and individually tailored student support. Our facilities are first-class, our learning environment is safe and secure and I am proud to say that we have a commitment from every member of staff to help our students succeed.

### Your future

Our students move into quality employment or go on to University following completion of their studies at Southport College.

To ensure that our students leave us as well-rounded individuals we enhance our courses by providing many additional opportunities including valuable work placements or work experience through our strong industry links; as well as the chance to take part in sports teams or activities, volunteering, trips and special events.

As a 16 year-old the range of options available to you when you leave school can seem overwhelming, so our Student Guidance team is available to contact for careers and course advice, ensuring you make the best choice for your next steps.

I do hope that this publication inspires you to join the thousands of other students who choose to take their next step with us each year and I very much look forward to welcoming you to Southport College.



## Ofsted say:

Ofsted Graded  
**GOOD**

2020

Ofsted  
raising standards  
improving lives

### It's all Good

In February 2020, we welcomed Ofsted inspectors into College and are very proud to announce the final report judged our overall effectiveness to continue as "Good".

The inspectors report was extremely positive, finding that:

"Learners benefit from a very caring and highly inclusive learning environment, and the relationships with their teachers are excellent. Learners participate in a range of activities linked to ambitious career goals with teachers effectively supporting them to progress to further study or employment."

- In addition the report identified that teachers 'encourage learners to develop their understanding through skilful questioning and by checking understanding of key concepts' and that learners with high needs and/or additional needs and/or disabilities 'receive early help and individual support' which 'helps them to develop their confidence and self-esteem'
- They also confirmed that 'The senior leadership of the College is very effective' and with a focus on staff wellbeing, the inspectors found that 'staff morale is high.'

Ronnie Fell, Chair of the Governing Body said:

"The Governors and I are delighted with this report from Ofsted. It is an affirmation of the 'merger' and a testimony to the strong leadership, high quality of teaching and commitment shown by our students to their studies.

"It is wonderful to now have our new Principal Michelle Brabner on board, as we move forward to be an outstanding college where students achieve their dreams and ambitions."







# Reasons to choose Southport College



Get on course



- 99% pass rate on Level 3 Extended Diplomas
- Leading Provider of Apprenticeships in the local area
- Interesting work experience placements and work related projects
- Easily accessible, spacious town centre location
- Friendly, industry-experienced tutors
- Free lunch for eligible students
- Strong links with local businesses and industry professionals
- Lots of opportunities for sports and enrichment activities
- Free travel pass\*  
\*Terms and conditions apply
- Fantastic facilities with realistic work environments
- Face to face learning in a safe and secure environment
- Excellent student support and courses tailored to your needs





## Vocational qualifications

**You've probably heard a lot about vocational qualifications.**

Many people think that A-Levels are the only route to a University course but this is not the case.

More and more students are opting to study vocational courses over A-Levels.

But how are vocational qualifications different?

Get on course

### Prepare for work

Our vocational courses mix theory and practical experience designed to prepare you for work. Most of our courses offer work experience or a work placement as part of the course and you will also benefit from the industry knowledge of guest speakers and local employers.

Some of our students work on live briefs (projects set up by local employers) that give them the experience of working in that job role.

### Go to University

Vocational qualifications can get you in to University, with BTEC Level 3 Extended Diplomas being equivalent to three A-Levels. University websites will tell you what grades you need to do a particular degree course.

#### Become a specialist

Unlike A-Levels where you would study a number of subjects, vocational qualifications are designed to give you an in-depth knowledge of one subject area.

This will be an advantage when you start your career or head to University as you will already have a detailed understanding of your chosen specialist area. The courses are industry-led which means what you are learning is what you would need to know to work in that sector.

### Gain a professional qualification

Many of our courses are industry recognised qualifications which means you will be ready to start your career once you have completed the course.

The College has realistic working environments including salons, treatment rooms, a restaurant, kitchens, studios, workshops and a 100+ seat theatre and rehearsal space.

All of these learning areas are designed to give you the experience of working in your chosen career and combined with your qualification, set you up for the next step towards your dream job.

### Earn while you learn

If you are keen to start your career, Apprenticeships are offered from Level 2 all the way up to degree level.

We have strong links with employers giving you great opportunities to work for local companies. Apprenticeships are a great way to get experience and achieve a qualification whilst getting paid.





## Open events & applying to Southport College

**We recommend that all applicants come to one of our open events.**

They are the ideal opportunity to view our fantastic facilities, meet our friendly, industry-experienced tutors, get a real feel for life at Southport College and to prepare for joining us in September. Families are welcome too and it's the perfect time to find about our unrivalled student support, travel passes and lots of other important College information.

For Autumn 2020, to keep our staff, students and visitors safe, our open events will all be held on line. Take a fantastic 360° tour of the buildings, visiting all the classrooms and workshops that interest you, and meet our tutors & support teams through video as you look around.

**The open event launches at [southport.ac.uk](https://southport.ac.uk) on Tuesday October 20th 2020 and will be available for you to visit as many times as you like until the end of December. Register on line for your tour pass today.**

**Once you've decided on the right course for you, the quickest and easiest way to apply to Southport College is online at [southport.ac.uk](https://southport.ac.uk)**

Get on course

### Step 1

#### Attend an Open Event

Autumn Term  
Live on line all term from  
Tuesday October 20.

Spring Term  
Monday 1 March 2021  
5.00-8.00pm

Summer Term  
Monday 24 May 2021  
5.00-8.00pm

### Step 2

#### Apply online at [southport.ac.uk](https://southport.ac.uk).

We advise our students to do this as early as possible as many of our most popular courses do fill up fast!

### Step 3

#### Course Discussion

After we receive your application, we will invite you to a course discussion to check if the course is right for you. It's also your chance to ask about things such as finance or learning support.

For Autumn 2020 and early 2021, course discussions will take place either on the phone or via video platform and parents or guardians are welcome to be on the call too.

Please note that you would like to visit us in person at any stage of your application, this can be arranged, so please do get in touch.

### Step 4

#### Formal offer

Following a positive course discussion you will be offered a place to become a Southport College student.

### Step 5

#### Enrolment

Our quick and efficient on line enrolment process will open for 2021 students from late spring and remain open throughout the summer.

You will be sent full details and your individual on line enrolment link nearer the time. Enrolling as soon as possible after receiving this secures your place and gives you one less thing to think about during the busy summer term.

### Step 6

#### Joining us as Student

**Your course will begin at the start of September 2021.**

You will receive information about your start date and timetable towards the end of August.

**If you have any questions during any of these stages then please get in touch.**

**We are here to help you.**

Please call our Guidance team on 01704 392704 or email [guidance@southport.ac.uk](mailto:guidance@southport.ac.uk).

Follow us on social media to keep up to date with College news, events and the latest information.

We look forward to welcoming you as a student to Southport College soon.





## Facilities at Southport College

Our courses are designed to prepare you for work in your chosen sector and our investment in realistic working environments, simulated work spaces, workshops and cutting edge technology are designed to give you the best possible advantage as you make your way into further study or on to employment.

### Workshops

Students on our Bricklaying, Electrical Installation, Engineering, Painting & Decorating and Vehicle Engineering courses all use purpose built workshops using industry standard tools, equipment and products.

### Cutting edge technology

Southport College continually invests in new technology, with students benefiting from the use of Mac rooms, a 3D printer and PC labs.

Games Design students use the same Hollywood standard computer-generated imagery program as those used to create the graphics in Oscar-winning films such as Pirates of the Caribbean and War for the Planet of the Apes.

### Continuing investment

Over the last few years Southport College has invested more than £2 million into modernising and refurbishing areas of the College.

Our Games Design, Creative Media & Photography learning areas were all recently refitted recently, and last winter saw the complete overhaul of our Gas and Plumbing Workshops, enabling these students to have the most up to date learning facilities available.

We are proud that our students continue to enjoy a full timetable of face-to-face learning in a COVID-safe environment.

Get on course







## Facilities at Southport College

### Clouds Restaurant

Hospitality & Catering students prepare food and drinks in our training kitchens and bar area which are then served to paying customers in the restaurant.

### Concept Salons

Hairdressing, Barbering, Beauty and Nail Services students work with paying clients in our fully operative salons offering a variety of hair, beauty and nail treatments.

### Performing Arts Theatre

Performing Arts students perform in our 100+ seat theatre throughout the year and also make use of the rehearsal rooms, dance studio and recording studio.

### Science Labs

Forensic & Criminal Investigations students use our recently expanded science laboratories and specialist equipment.

### Photography studio and dark room

Photography students use our extensive bespoke facilities including a darkroom and photography studio.

### Nursery

Childcare students work with visiting young children in our nursery room.

### Hospital room

Health and Social Care students are able to benefit from working in our hospital ward simulation unit. This great facility gives our students hands on experience of using electronic beds and also includes pregnancy and ageing simulation suits to enable practice of specialist patient care and observation.

### Crime Scene Room

Forensic & Criminal Investigations students have access to our specialist crime scene room where they practice their investigation skills.

Get on course



Our Plumbing and Gas workshops have been completely refurbished creating fantastic state-of-the-art facilities for our students.





## Student Information Centre

Throughout your time with us, you will have access to a wide range of information, advice and guidance. Coming to College might seem like a big leap from being at school, which is why we have a range of support in place to make the change as easy as possible.

The Student Information Centre is a one-stop shop for any information, advice and guidance you may need before and during your time at College. We aim to ensure that you have the support you need to enable you to make the most of your time at College and plan your future.

### Financial support

#### 16-19 bursaries

This is a fund intended to assist those students who face the greatest barriers to being in education, e.g. care leavers, young people in care and young people in receipt of Income Support. Students who do not qualify for the full £1,200 may qualify for help from the Bursary Fund with course-related costs, e.g. kit, equipment, uniforms, books.

#### Travel passes

The College offers students\* who live over 1 mile away from College and study a full-time Further Education course the opportunity to apply for a free travel pass or funds. The passes can be used on either Stagecoach, Arriva or Merseyrail networks.

#### Care to Learn (Childcare support)

Care to Learn provides financial support for young parents. The scheme can pay up to £160 a week towards childcare. You must be aged under 20 on the date you start your course. For further information call 0800 121 8989. Other funds are available for students aged 19 and over, please visit the Student Information Centre for further information.

### Safeguarding and welfare support

We recognise our duty of care to students and the wellbeing of our students is paramount at all times. Safeguarding Officers offer support to all learners who may be facing adversity, including those who are Looked After, Young Carers, Teenage Parents or who are under the supervision of the Youth Offending Team.

We also work with learners who are in financial crisis and are able to offer financial support via charitable bursaries (subject to eligibility), housing support and access to local foodbanks.

Need help deciding on the right course?  
Contact the Student Information team for a 1:1 guidance interview to discuss your options.  
Telephone: 01704 392704  
Email: [guidance@southport.ac.uk](mailto:guidance@southport.ac.uk)

### Feel safe

Southport College is committed to creating an environment that is safe and welcoming to all students. As a College, our community includes young people aged 14 to 18 and vulnerable adults.

We ask that you wear your student ID badge at all times and our security staff monitor this throughout the day. For this reason and as part of our commitment to safeguard our students and provide a secure place to learn; we ask all potential students to declare if they have a criminal conviction, any pending court cases or if they have been charged with any criminal offence either at application stage or during their course.

You will be asked to complete a declaration at the point of enrolment. If you do have convictions, you won't be automatically excluded from enrolling on a College course; each case will be considered individually.

For further information please contact the Safeguarding Team on 01704 392821 or via email on [safeguarding@southport.ac.uk](mailto:safeguarding@southport.ac.uk)

The Student Information Centre can help you with:

- Information, advice and guidance about courses
- Impartial careers guidance and support
- University information and student loans
- Financial assistance such as travel passes, help with kits, uniforms and childcare
- Access to the Safeguarding and Welfare Team
- Counselling support

\*Students aged 16-18 who live more than 3 miles away from the College on a full time course will be eligible for travel passes (or funds where necessary). Students who live 1 to 2.9 miles away from the College and are 16-18 are means tested before passes are issued. Students aged 19 and over will be means tested to assess for eligibility before passes or funds are issued. Other terms and conditions apply. Additional information is available on the application form or through contacting the Student Information Centre.



## Learning Support

Get on course

### Support for identified students

Identified students who disclose a support need are individually interviewed to assess their needs and the level/type of support or tutoring required. We also regularly review all students receiving support to ensure the most appropriate support is in place.

In addition the College has:

- A Health and Wellbeing Coordinator who coordinates a service for students identified with a medical need, attends first aid calls and can signpost students to relevant outside agencies.
- Learning support in and out of class
- Learning Support Suite (to aid the transition to College)
- Personal care assistants
- Safe 'time-out' space
- Social/emotional/behavioural support
- Supervision at lunch and break time if needed
- Support and /or screening by our Specialist Tutoring Team for students with specific learning difficulties (SpLDs) in order to apply for access arrangements e.g. extra time, reader, scribe etc.
- Support with communication skills
- Transition visits



Vickie Hayes: Learning Support Coordinator



# Student Enrichment



Southport College offers lots of opportunities to get involved in different enrichment activities throughout the year.

Get on course







## Student Enrichment

Alongside studying for your course, Southport College offers lots of opportunities to get involved in different enrichment activities throughout the year, including beach clean ups, cross college committees, raising money for good causes, belonging to the student council, joining our LGBT+ society or even becoming a student governor.

In January 2020 we were the first college in the country to receive the Rainbow Flag Award, which recognises our commitment to supporting our LGBT+ community. There is a dedicated LGBT+ student group and College recruits LGBT+ Student Ambassadors each academic year who support Open Events and LGBT+ visibility events across the year. College also hosts 3 parent/carer LGBT+ information evenings each academic year.

Enrichment is about providing opportunities to bring learning to life and broaden your range of interests.

It is a good way to make new friends and learn new skills, and it also looks great on your CV or UCAS Personal Statement.

### Sport@Southport stay fit and have fun

At Southport College there are a wide range of sport and physical activities on offer for students to take part in.

There are weekly sessions in badminton, 5-a-side football, short tennis, dodgeball, basketball, table tennis, yoga, running, walking, benchball and multi-sports, as well as competitions in short tennis, rounders, table tennis and football.

The College also has representative teams in 11-a-side football, volleyball, netball, rugby union and basketball, and these teams compete on a regular basis throughout the year. Additionally, there is also the fully equipped College gym, which is free to all students and is open throughout the week.

### Join the Student Events Team

The Southport College Marketing Team regularly recruit friendly, capable students from across the College to join our Student Events Team. The team then work together with our busy marketing department to help deliver a whole range of exciting events on and off the College campus throughout the year. These include open evenings, taster days, school careers fairs, awards events and even our Fresher's Fest. It's a great way to grow in confidence, develop your organisational or public speaking skills, enhance your CV and of course to make new friends too.

You will receive all the training and support you need and we do our best to make it enjoyable as well as a valuable work experience to impress future employers.

### Make a difference with the Student Council

Each year the Student Council recruits a number of individuals who act as representatives for their fellow students. They get involved in a range of projects including organising charity events and working with College management giving their input on important College decisions.

Being a part of the Student Council is a great way of making new friends from different courses, as well as building your confidence and developing teamwork skills; all things that look great on your CV or UCAS Personal Statement.



Achieved January 2020

Get on  
course



For more information on  
LGBT+ events please contact  
Vickie Hayes on  
01704 392872 or email  
vickie.hayes@southport.ac.uk





## English and maths

**Whatever you are planning to do in the future, it is important you have a firm grasp of English language and maths.**

More and more businesses are insisting their employees have GCSE's in both English and maths at grade 4 or above and it is an essential part of University entry criteria too.

If you don't already have a grade 4 in English and maths when you arrive at Southport College, we will create a personalised study programme for you that will fit alongside the course you have chosen, and will help you to achieve these vital qualifications.

Get on course







## Awards Events

### Apprenticeship Star Awards

In spring we hold our annual Apprenticeship Star Awards in our beautiful Clouds restaurant.

This sparkling occasion is a great opportunity to recognise those outstanding achievers on our Apprenticeship programme.

### End of year Awards

In June, we move to the College Theatre for the prestigious end of year awards.

Each department has their own event with the shining stars from each course receiving recognition.

### Southport College University Centre Graduation

Then finally in August we have our formal Southport College University Centre Graduation for all of our HE students, held in the opulence of Holy Trinity Church.

Get on course



The success of our students is really important to us here at Southport College, and we like nothing more than an opportunity to celebrate this with you.

Friends and family are invited to join in the celebrations too and they are a fantastic way to mark the wonderful achievements of our students.



## Student Destinations

Level 3 Extended Diplomas, which are the equivalent of three A-Levels, are worth up to 168 UCAS points which can be used to get on to a degree course.

For all of our students the ultimate goal is to get a job in their chosen sector and Southport College students are in demand. Many of our students have taken jobs with prestigious companies, undertaken roles within the armed forces or even set up their own businesses.

### University

Many universities use UCAS points as entry requirements for higher education courses. Universities will set the minimum number of points required for entry on to each course they offer and it means you can work out if you have the right qualifications and grades to apply for your chosen course. A BTEC Level 3 Extended Diploma, equivalent to three A-Levels, is worth up to 168 UCAS points. Make sure you check University websites for specific entry requirements if you have a particular course in mind.

### Hundreds of our students are now studying for degrees at Universities across the country including:

- ALRA Drama College
- Amsterdam University College
- Bangor University
- Chester University
- Edge Hill University
- Essex University
- Goldsmiths University
- Kings College London
- Leeds Beckett University
- Leeds College of Art
- Liverpool Hope University
- Liverpool John Moores University
- Manchester Metropolitan University
- Norwich University of the Arts
- Nottingham University
- Sheffield Hallam University
- Southport College University Centre
- Staffordshire University
- Swansea University
- University of Bolton
- University of Central Lancashire
- University of Chester
- University of Exeter
- University of Gloucestershire
- University of Liverpool
- University of Manchester
- University of Nottingham
- University of Salford
- University of South Wales
- University of The Arts London
- University of Winchester
- University of York

Get on course

100%

100% pass rate on Level 3 Year 2 Extended Diplomas.

69%

69% of the students on Level 3 Extended Diplomas obtained at least one distinction.

70%

Almost 70% of students on Level 3 Extended Diplomas obtained at least 112 UCAS points; the equivalent of BBC at A-Level.

111 Students

111 students on Level 3 Extended Diplomas achieved three distinctions or distinction \*s (equivalent to three A or A\* grades at A-Level).

### Our students have gone on to study over 100 Higher Education courses

- Accounting & Finance
- Aerospace Engineering
- Archaeology
- Architecture
- Asia Pacific Studies - Japanese
- Automotive Engineering
- Biology
- Biotechnology
- British Sign Language & Deaf Studies
- Building Surveying
- Business Management
- Child & Adolescent Mental Health
- Childhood & Youth Studies
- Civil Engineering
- Comedy Performance & Production
- Computer Games Development
- Computer Science
- Construction Management
- Creative Writing
- Criminal Justice & Forensic Psychology
- Criminal Psychology
- Early Years Education with QTS
- Environmental Conservation
- Event Management
- Fashion Photography
- Film & Television Production
- Fine Art
- Forensic Psychology
- Forensics & Criminal Investigation
- Games Art
- Games Design
- Graphic Design
- Health & Social Care
- Illustration
- Information & Interface Design
- International Hospitality Management
- Law & Criminal Justice
- Marine Biology/Oceanography
- Mechanical Engineering
- Medical Imaging (Diagnostic Radiography)
- Midwifery
- Music Production
- Nursing (Adult)
- Nursing (Child)
- Nursing (Mental Health)
- Nutrition & Health
- Operating Department Practice
- Outdoor Adventure Leadership
- Paramedic Practice
- Performing Arts
- Pharmacy
- Photography
- Photo Journalism Documentary
- Physical Sciences
- Physiotherapy
- Podiatry
- Policing & Criminal Investigation
- Primary Education with QTS
- Psychology
- Psychosocial Analysis of Offending Behaviour
- Quantity Surveying
- Social Work
- Sport & Exercise Science
- Sports Coaching & Development
- Sports Therapy
- Textile Design
- Veterinary Nursing
- Working with Children & Families
- Zoology with Animal Behaviour





## Student Success

### A career after College

Southport College students progress on to great things, from University and higher level Apprenticeships, to running their own companies or building a fantastic career.

Our role is to help and inspire our students to acquire the skills and knowledge they need to achieve their dreams and ambitions and we are very proud of each and every one of them.

COOPERHEAT

Get on  
course



**FIRE  
IT UP**  
Apprenticeships

### Ryan Mallinson

Level 4  
Engineering Apprenticeship.

Previous School:  
Stanley High School.

"Following school, I joined Stork's Heat Treatment division Cooperheat and started the Level 2 Apprenticeship programme in partnership with Southport College.

"I then continued onto an Advanced Apprenticeship which allowed me to specialise further in Engineering Design and Computer Aided Design. I progressed onto an HNC in Engineering and was promoted to the role of Design Engineer. I am now studying a HND which will allow me to become a more competent Design Engineer and take on specialist projects. I was proud to be awarded Stork's REACH Beyond Zero Award for HSEQ Improvement which celebrates excellence in Health, Safety, Environment and Quality.

"I am really grateful for the opportunities and support that I have received from my employer and lecturers at Southport College. I would highly recommend the Apprenticeship programme as a route to a successful career in Engineering."





## Student Success



### Jeremy Jackson

Level 3  
BTEC Extended Diploma  
Construction, Surveying  
and Architecture.

Previous School:  
Birkdale High School.

"I thoroughly enjoyed my  
time at Southport studying  
CSA and really benefitted  
from the excellent teaching.

"My tutors were so  
enthusiastic and  
knowledgeable about the  
course, they really made  
studying fun and they gave  
me a real passion for all  
aspects of the subject.

"I chose to come to  
Southport College because  
it offered me the right  
course and the opportunity  
to gain the relevant  
qualifications to progress  
on to University and it paid  
off because of the support  
and teaching,

"I gained three Distinction\*s  
at the College and I am  
now going into my final  
year at Loughborough  
University, where I am  
studying Architecture,  
Engineering and Design  
Management.

"After graduation, my  
ambition is to work as a  
project or site manager  
within the construction  
industry."



Get on  
course



### Anna Saundry

Level 3  
Extended Diploma  
Health and Social Care  
Extended Diploma  
Acorn Pathway.

Previous School:  
Formby High.

"I have wanted to be a  
midwife since I was 8 years  
old and when I found out  
about this course, I knew it  
was the only one for me.

"It included 2 days a week  
hospital placement right  
from the start which was a  
fantastic opportunity to get  
hands on experience and  
build relationships in the  
hospital trust – and it really  
allowed me to chase my  
dreams!

"The grounding I got and the  
skills I learnt at Southport  
College were invaluable.

"I qualified with 3 distinction  
\*s and I was thrilled to then  
be offered at place to study  
midwifery at Liverpool John  
Moores University.

"I'm now in my 3rd year and  
have already delivered 29  
babies! I hope to join the  
maternity team at Ormskirk  
Hospital full time once I  
graduate.

"Thank you Southport  
College for helping me kick  
start the career I've always  
dreamt of."







## Student Success



### Aaron Rimmer

**Previous School:**  
Christ the King School  
Catholic High School.

**Apprenticeship in Vehicle  
Maintenance and Repair**  
**Company: MD Travel.**

"I've always wanted to be a mechanic and when I found out about Apprenticeships at Southport College, it seemed like the ideal way to gain the skills I needed and earn a proper wage at the same time.

"The support I've had from the team at Southport College has been fantastic and MD Travel are a great company to work for.

"I have learnt such a lot since I started working here and I will be a fully qualified mechanic and MOT tester by the time I'm 21.

"If you are looking to really get on with your career and want to earn whilst you learn, I would definitely recommend an Apprenticeship with Southport College."



Get on  
course

**MENDO DESIGN**  
DESIGN, SIGNS & PRINT

### Jay Lewis

**HND**  
**Graphic Design.**

**Company: Mendo Design.**

"I came to Southport College to study Graphic Design and it was honestly one of the best decisions I have made. The course is a great way to learn and gain experience and you are in very good hands with the tutors!

"They have so much experience and knowledge of the industry and pass this on to their students but also care about you as an individual and your progress.

"I learnt so much whilst on the course from the many different processes used in graphic design to dealing with customers and working in the real world.

"I had a dream to set up my own design/print agency and have recently teamed up with a friend and achieved just that. Mendo Design.

"I have reached my career goal and Southport College helped me get there!"





# Apprenticeships



An Apprenticeship is a job with training and an alternative route into skilled employment. Apprenticeships are designed in partnership with employers to ensure employees gain the skill they need to do their job well.

Apprenticeships are offered in over 1500 occupations and available to people over the age of 16.

## How does an Apprenticeship work?

Apprentices work alongside experienced staff to gain knowledge, experience and ultimately a qualification in the area they wish to pursue a career in.

Apprentices can be paid the National Minimum Apprenticeship Wage or the National Minimum Wage according to age but some apprentices earn significantly more.

As part of the structured programme, apprentices work towards qualifications by studying technical skills and carrying out practical assessments.

Depending on your employer and their type of business you may receive training on a day-release basis, where you would attend college one day a week. However for some Apprenticeships, all training is delivered in the work place.

### Can I do an Apprenticeship?

Apprenticeships can be challenging as you will be working for an employer and training for your job role at the same time. Our checklist below will tell you if an Apprenticeship could be the route for you:

- You must be over the age of 16 and have completed your GCSEs
- You must find a job in your chosen sector and have an interest in progressing in that job role
- You must have a minimum Grade 4 in GCSE English and maths or a willingness to improve your English and maths skills.
- Your employer must be willing to offer you an Apprenticeship
- You will need a good work ethic, excellent timekeeping and a professional approach

### How do I get an Apprenticeship?

There are many ways you could find a suitable Apprenticeship. We recommend trying more than one way to find an Apprenticeship.

#### Look for vacancies

Register with the National Apprenticeships Services [www.gov.uk/apply-apprenticeship](http://www.gov.uk/apply-apprenticeship) and view their current vacancies. If you are interested in any of the advertised vacancies you can apply through their website. You can also view the Apprenticeship vacancies on the Southport College website. These are the vacancies where Southport College will deliver the training for those employers.

#### Approach employers

You can find your own Apprenticeship by approaching businesses with your CV and a Covering Letter. Remember to choose businesses that you are interested in working for.

#### Join our talent pool

Once you've finished your GCSEs you can join the talent pool at Southport College. We may be able to match you with an Apprenticeship and an employer that suits you. To join our talent pool send your CV and covering letter to [employer@southport.ac.uk](mailto:employer@southport.ac.uk)

For more information about Apprenticeships at Southport College visit [www.southport.ac.uk](http://www.southport.ac.uk), email [guidance@southport.ac.uk](mailto:guidance@southport.ac.uk) or call 01704 392704.

Get on course

## Kate Wilkinson

Level 2  
AAT Apprenticeship.

Previous School:  
Bishop Rawstone Church  
of England Academy.

"I chose to do an apprenticeship as I was interested in earning money while learning.

It allows me to earn whilst developing my skills and knowledge both practically in the work place and academically at the College.

Doing an apprenticeship has supported me towards my chosen career because I feel that I have gained more practical experience than I would have done had I gone to University.

The AAT course also provides you with a good understanding of manual accounting which is important if software ever lets you down!

I hope to become a chartered accountant in the future so will continue at Southport College over the next couple of years studying AAT Level 3 and Level 4."

An Apprenticeship means:  
Earning a salary  
Gaining relevant work experience  
Learning job-specific skills  
Receiving training  
Getting paid holidays







## Traineeships

**Traineeships**

Southport College is seeking to assist unemployed young people aged 16-24 to secure employment by providing them with meaningful opportunities to develop transferable skills.

### How does an Traineeship work?

The Traineeship programme is designed to assist young unemployed people gain transferable skills. Traineeships are an opportunity to gain real work experience and job skills and to improve English and maths, if needed. It gives young people the skills and experience that employers are looking for, helping to boost confidence and career prospects with an Apprenticeship, Further Education or employment.

To be eligible for this course you will need to be aged 16-24 and not in education, employment or training.

To find out if a Traineeship is for you or to view our latest Traineeship vacancies visit the Traineeships page on our website [www.southport.ac.uk](http://www.southport.ac.uk).

#### The Programme

Our programme, has an average duration of 12 weeks and is tailored to your individual needs.

You will cover a number of subjects including:

- 📍 Employability skills
- 📍 English and maths (if required)
- 📍 Progress

#### Placement

You will also undertake a placement of 3 days per week, which will be matched to your areas of interest and aspiration, where you will undertake high quality work experience rather than observation or mundane tasks. You will be well prepared for your placement during your sessions at College.

#### Feedback & review

You will also receive regular constructive feedback from managers and formal reviews will take place at key stages with you, your placement manager and Southport College.

#### At the end of the course you can progress to:

- 📍 Apprenticeship
- 📍 Employment
- 📍 Higher level course at Southport College

If you are interested in a Traineeship you can register by speaking to our Student Guidance team on 01704 392704 or email: [traineeships@southport.ac.uk](mailto:traineeships@southport.ac.uk)

**A Disclosure & Barring Service (DBS) check may be required for certain placements.**

Get on course

### Jade Letford

"The Traineeship programme at Southport College allowed me to gain confidence in myself. The programme also taught me that if you focus on the bigger picture of what you want to achieve and put in the work, then anything is possible.

"Never in my wildest dreams did I think that someone like myself, with no previous experience, would be working in one of the best solicitors within the country and one of the Times 100 Best Companies to work for. The Traineeship/Apprenticeship gave me that opportunity and without them I don't think this would have been possible.

"Whilst on the course I was given the opportunity to learn the important key skills that are required in the working environment.

"I was also given the support and guidance throughout the course, which is leading me on the pathway towards a career in law.

"Once I'd finished the Traineeship I went onto complete an Apprenticeship.

"I then re-applied for a job within Fletchers and I had a successful interview and got the job!"





## Find your level



The courses at Southport College are designed to get you where you want to be. They are available at different levels so you study at a level to suit your ability.

Our courses are vocational which means you put the theory you learn into practice. This means that when you finish the course you have gained skills that businesses want, as well as studied the theory.



### Connect (Entry Level)

Our Connect course is for learners who are working towards Entry Level 2. The course is tailored to a student's individual needs and focuses on the transition to College from school as well as preparation for their next step.

It consists of two 1-year courses dependent on the ability/achievements of students. The course is designed to give students the confidence and skills to progress on to one of our vocational courses, work experience through a supported internship or move towards independent living.

### Aspire (Entry Level 3)

This is a one-year course designed to help students to prepare for their next step on the career ladder.

Students learn employability and independent living skills and during the course try out tasters in a number of different subjects around College to help them to choose what they would like to progress to next.



### Ambition (Level 1 Pathways)

Our Level 1 pathway allows you to study in your chosen vocational area whilst further developing your English, maths and employability skills.

There are four Level 1 Ambition pathways, the courses take one year to complete and are an introduction to your chosen subject. When you have finished the course you may be ready for Level 2, full-time work or an Apprenticeship.

### Next Step (Level 1)

This 16 week course is for students who have been out of education and combines enrichment activities and employability skills as well as providing academic support and improving students' confidence and life skills.

The course is designed to give students the skills and abilities to progress on to one of our vocational courses.

Get on course



### Level 1

**Bricklaying, Hospitality & Catering, Professional Cookery, Motor Vehicle**  
These one year courses are an introduction to your chosen subject. When you have finished the course you will be ready for Level 2, full-time work or an Apprenticeship. For entry requirements, please see the individual course listings.

### Level 2

One-year courses that cover more of the subject than a Level 1 course.

You will study your chosen subject in detail as well as put the theory into practice. After you have completed the course you will have the option of progressing to Level 3, looking for full-time work or perhaps starting an Apprenticeship.

Entry requirements for this level vary from course to course; please see the individual course listings.



### Level 3

These vocational qualifications take one or two years to complete depending on your chosen subject. Once you have completed your course you can progress into employment or onto an Advanced or Higher Apprenticeship.

Some Level 3 courses may also give you enough UCAS points to progress to Higher Education. To study a skills-based course at Level 3 you will need a Level 2 qualification in a vocationally related area.

### Level 3 Extended Diploma

The highest level of course you can study with us straight after your GCSEs; these are the vocational equivalent of A-Levels. They take two years to complete, give you the UCAS points to apply to University and can be worth the equivalent of three A\*grades at A-Level. They also give you the experience that businesses want so you can apply for a job or an Apprenticeship. To study for an Extended Diploma you will need a minimum of 5 GCSEs at grade 9-4 (A\*-C) including Maths and/or English at grade 4 or equivalent.



### Higher Education

We also offer a range of higher education courses including HNCs, HNDs, Foundation Degrees and Top-Up Degrees.

To find out more call 01704 392704 or visit our website.

Some courses may have subject-specific entry requirements. Please see the relevant course pages online.





## Industry links

Southport College works with many large and small employers. Through these links we can offer students Apprenticeships, valuable work placements, creative 'live' briefs, guest speakers, progression opportunities and much more...

### Some of the businesses we have recently worked with:

- Army
- Bijou Cinema Southport
- Blackpool Pleasure Beach
- Bliss Hotel Southport
- CAE Technology Systems
- Clymol
- Cooperheat
- Decleor
- Dovehaven Care Homes
- Dulux Paints
- Edge Hill University
- Farmageddon
- Fletchers Solicitors
- Formby Hall Golf Resort & Spa
- Graham & Brown
- Hamilton Acorn
- Hogg Robinson UK
- Ilford & Harman Technology
- J.A.R.E Airline Training Partnership
- Jason James Salon
- Lattimers
- Liverpool Women's NHS Foundation
- L'Oreal
- Mac
- MD Travel
- Monkey Puzzle Day Nursery
- RAF
- Royal Academy Arts
- Samaritans UK
- Sound City Liverpool
- Southport Flower Show
- Southport & Ormskirk Hospital NHS Trust
- The Atkinson
- The Vincent
- UCLan
- University of Cumbria

L'ORÉAL



— VINCENT —



GRAHAM & BROWN

THE  
ATKINSON

Southport & Ormskirk Hospital  
NHS Trust **NHS**

BLISS HOTEL  
SOUTHPORT

FLETCHERS SOLICITORS



Dovehaven Care Homes



LATTIMER

COOPERHEAT



Get on  
course

As technology moves ever forward and competition becomes stronger, we need highly skilled engineers with a higher education to take us forward and meet the challenge head on.

Alan Andrews | Lattimer Engineering





Get on  
course

## I'm on course

Whichever direction you want to head, Southport College has the ideal course for you with just the right mix of skills, knowledge and work experience employers are looking for.

Our friendly and supportive tutors are all industry-experienced and our learning facilities are first rate. From a fully working bar and restaurant, hair and beauty salon and even an aeroplane cabin to forensic labs and brand new gas and plumbing workshops to name but a few, you'll find everything you need to succeed at Southport College.

Explore this prospectus and visit us online, and you'll be on course too!



The work of students qualified in art and design can be seen all around you. Paintings and sculptures in galleries, interior design, the latest fashions on the high street, film sets and stages for theatre and concerts are all developed with the input of a qualified artist or designer.

There are so many opportunities available in Art and Design. Previous students have gone to University to study a range of degree courses including Fine Art, Makeup & Special Effects, Fashion, Art History, Surface Pattern and Illustration. University destinations include Leeds College of Art, University of Central Lancashire, Manchester Metropolitan University, St Martins and University of the Arts London. Some students chose to stay on to study one of our range of higher education courses, continuing to take advantage of the great facilities and high quality teaching at Southport College.

## Why choose Southport College?

Our tutors have all worked as artists or fashion designers and continue to make and exhibit their own work. They pass on their extensive industry knowledge to students and also help them to prepare to host an end of year exhibition showcasing their hard work to the public and employers.

Our courses prepare students for University, tutors provide strong positive guidance to students and the courses have very successful progression rates.

We deliver the prestigious UAL (University of the Arts London) qualifications which are specially designed to be relevant to the needs of the creative arts industry, placements throughout the course, as well as opportunities to work on projects for real businesses.

Industry-standard tools and equipment are used throughout the department and all of our tutors are industry-experienced tradesmen and pass on their skills and knowledge to the students.

### Level 1 Creative Design (Ambition)

#### One year

**Entry requirements** Minimum one GCSE at grade 3 (E), two GCSEs at grade 2 (F) or completion of Aspire at Entry Level 3 and English and maths at grade 1.

**Progression** Level 2 course such as Art & Design.

### Level 2 Art & Design

#### One year

**Entry requirements** Minimum one GCSE at grade 4 and two GCSEs at grade 3 (D) including English and maths or Level 1 Diploma in a related subject and Level 1 Functional skills in English and maths.

**Progression** Employment or Level 3 Art & Design.

### Level 3 Applied General in Art & Design Extended Diploma Equivalent to Three A-Levels (up to 168 UCAS points)

#### Two years

**Entry requirements** Five GCSEs at grade 9-4 (A\*- C) including maths and/or English or pass/merit in a related Level 2 Extended Diploma and maths and/or English at Level 2.

**Progression** Employment or University.

Every applicant will need to have a course discussion and may need to provide a reference. Applicants will also be required to show a good portfolio of work.

### What will I study?

- 📍 Contextual studies
- 📍 Drawing techniques
- 📍 Fashion
- 📍 Life drawing
- 📍 Painting techniques
- 📍 Printmaking
- 📍 Textiles
- 📍 Using Photoshop

### Careers after the course

- 📍 Art Gallery Curator | £18,000-£40,000
- 📍 Art Teacher | £22,000-£37,000
- 📍 Art Therapist | £26,000-£48,000
- 📍 Fashion Designer | £18,000-£60,000
- 📍 Interior Designer | £18,000-£45,000+
- 📍 Product Designer | £19,000-£50,000
- 📍 Tattooist | £15,000+
- 📍 Visual Merchandiser | £12,000-£55,000

## Victoria Iddon

Level 3  
Art & Design  
Extended Diploma.

Previous School:  
Range High School.

"I chose to do the Art course as it's so diverse and you learn so much.

"I've loved the freedom you get on the course to explore whatever aspect of art you want. There is no pressure to follow a certain route; you can focus your projects around your strengths and interests.

"The facilities are amazing. You get a personal work space in the workshop to work on your pieces and display them. The equipment available is great too!

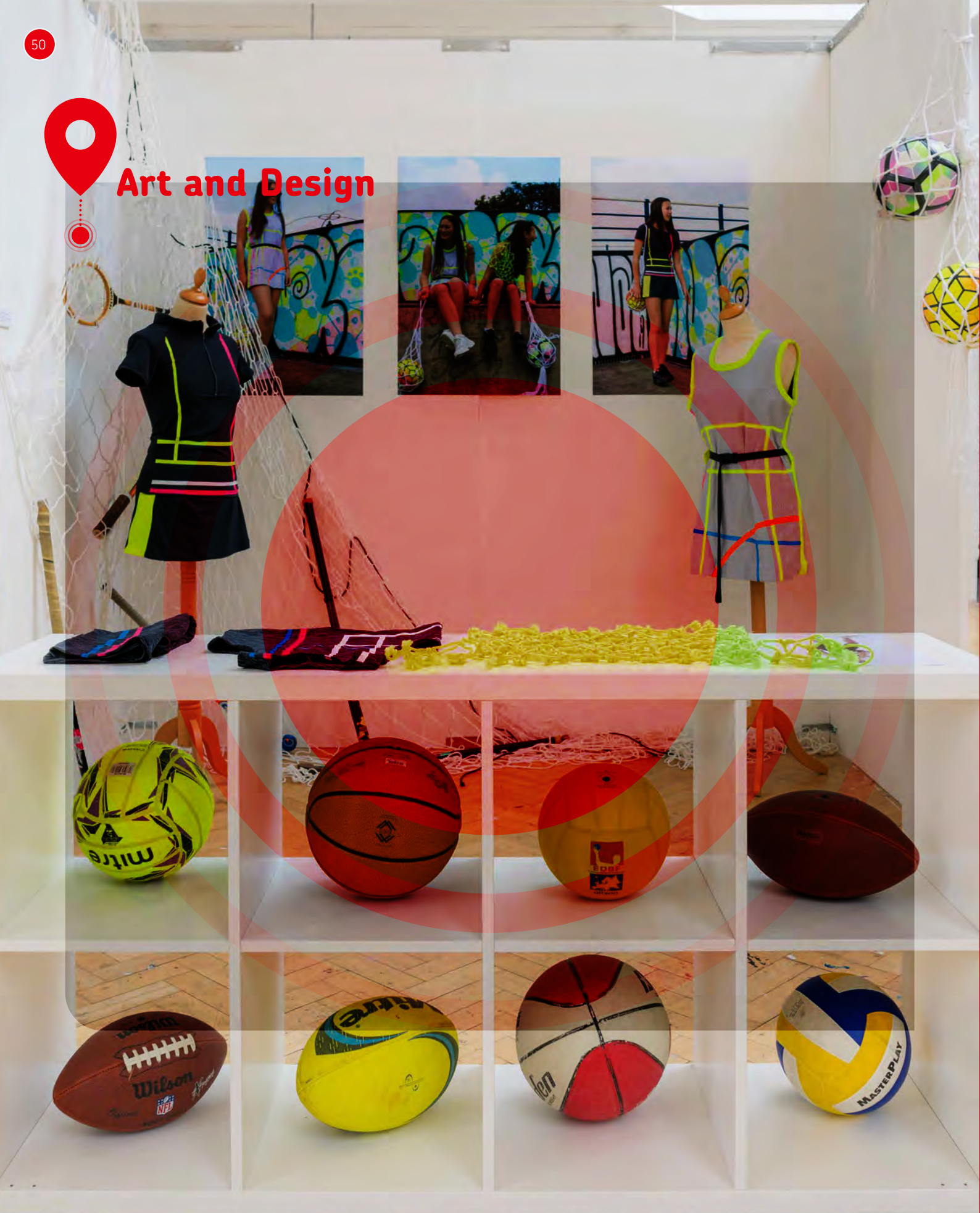
"Coming to Southport College was the best decision I ever made! I'm going to LJMU next year to study Fine Art and certainly wouldn't have got my place had I not been to Southport College."

Students are also given the opportunity to go on a range of trips. Last year students went to Berlin and London to experience the culture and art of the city.

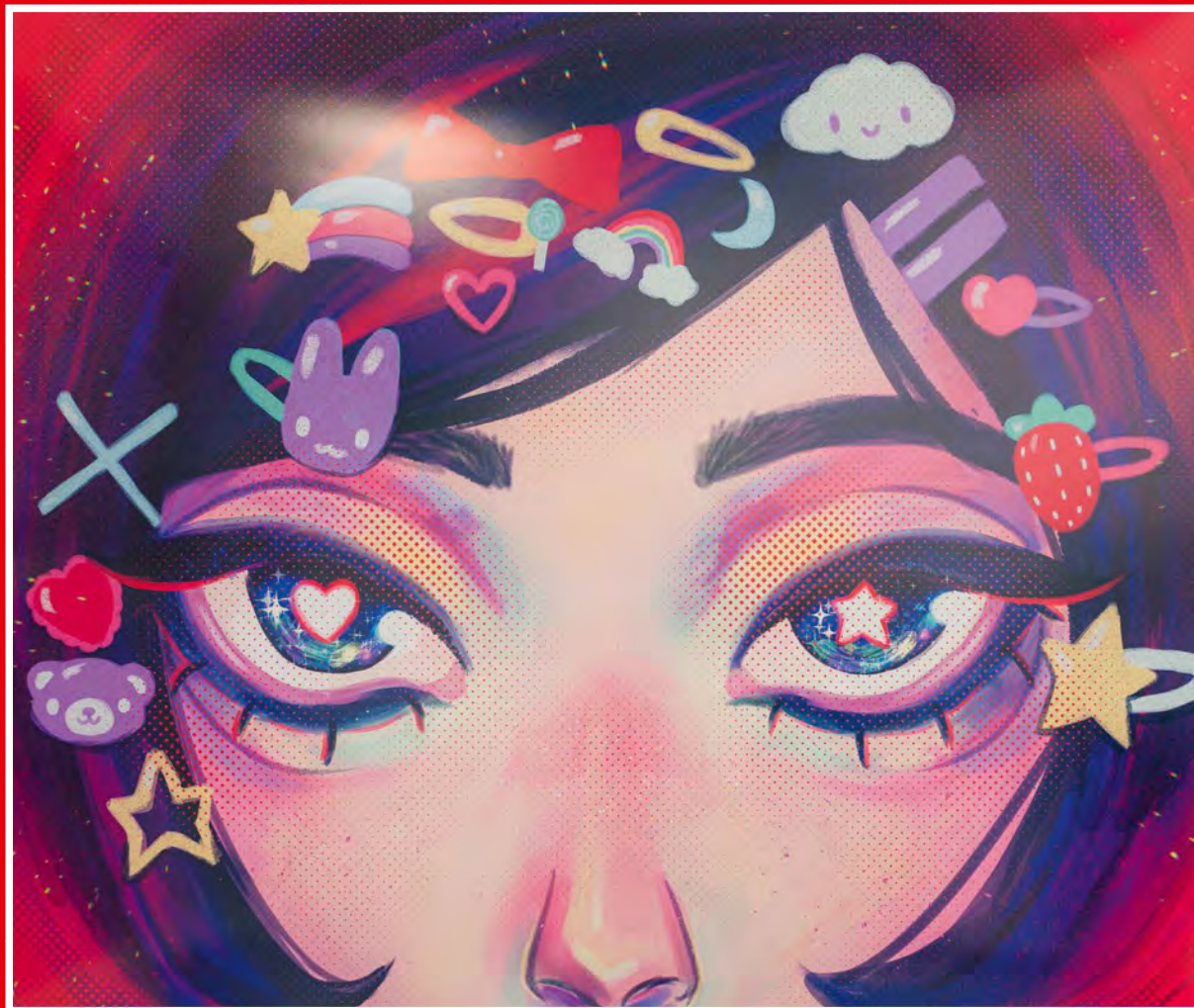




# Art and Design



Get on course



Just a small sample of our students exciting creative work.

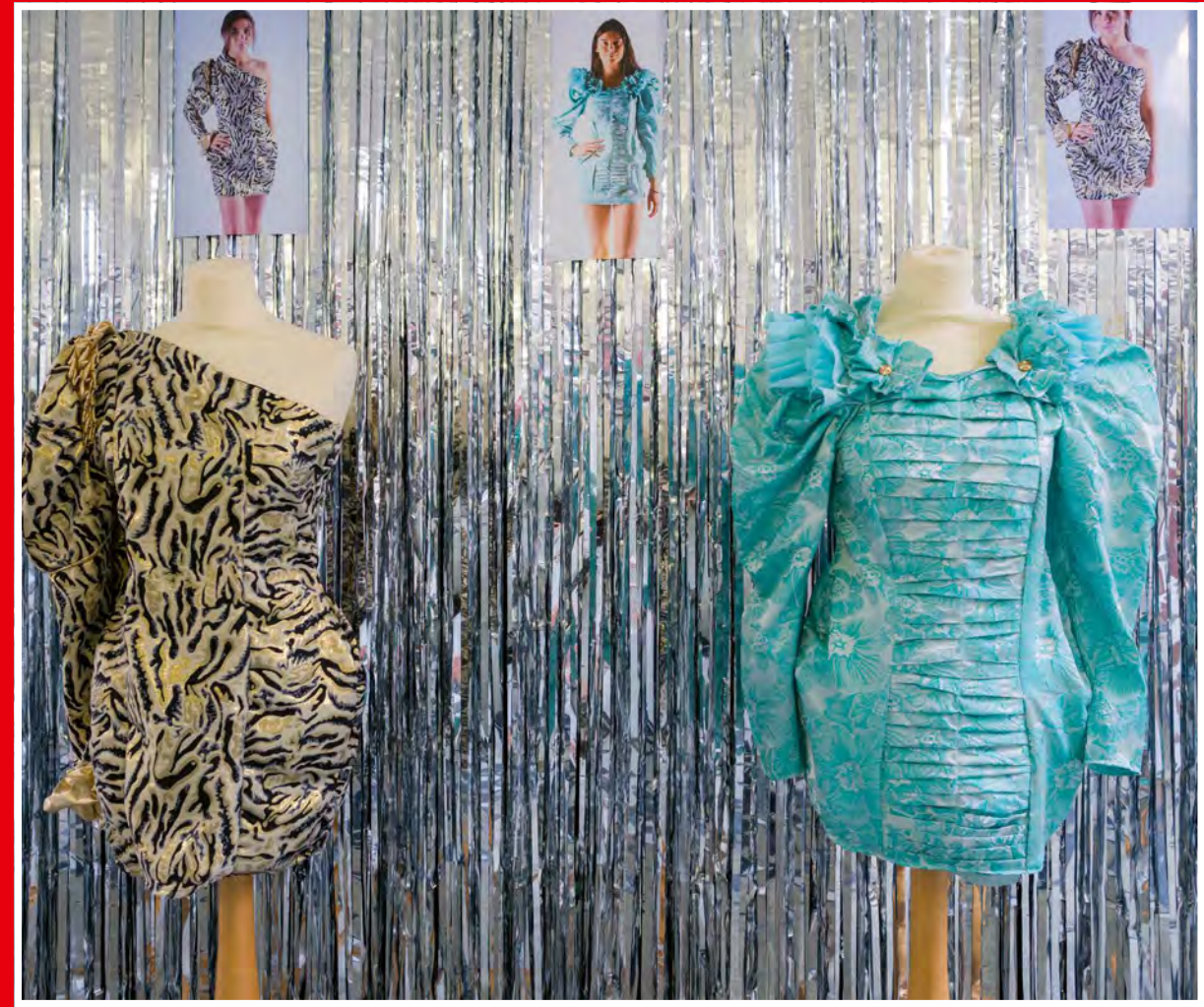




# Art & Design



Get on course





## Beauty

With a growing appetite for new products, treatments and beauty services, the beauty sector has experienced continued growth over the last few years. The beauty sector offers many different career opportunities and our courses are designed to give you the skills to gain employment in this diverse sector. Students on our Beauty and Nails courses are kept up to date with the latest trends with guidance from employers and HABIA (the hair and beauty industry body).

Once full-qualified you could become a beauty therapist, specialist nail technician, massage therapist, photographic session stylist, makeup artist or salon manager.

### Why choose Southport College?

You will be based in Concept, our fully operative, working salons. You will learn all aspects of a busy working salon from the reception, to how to use industry-standard equipment.

There are regular trips and visits organised so students can find out more about working in the beauty sector. These include events such as Salon International, London and the Professional Beauty Show, Manchester where students are able to sample new products and equipment.

Our students take part in professional workshops, charity events and benefit from the industry knowledge of guest speakers and trainers.

#### Level 1 Hairdressing and Beauty Therapy (Ambition)

##### One year

**Entry requirements** Minimum one GCSE at grade 3 (E), two GCSEs at grade 2 (F) or completion of Aspire at Entry Level 3 and English and maths at grade 1.

**Progression** Level 2 courses such as Hairdressing, Beauty Therapy or Nail Services.

#### Level 2 Beauty Therapy Diploma

##### One year

**Entry requirements** Minimum one GCSE at grade 4 and two GCSEs at grade 3 (D), including English and maths or Level 1 qualification in a related subject with Level 1 Functional Skills in English and maths.

**Progression** Employment or Level 3 course.

#### Level 3 Beauty Therapy Treatments Diploma

##### One year

**Entry requirements** Pass at Level 2 in related subject and a minimum grade 4 in English and/or maths or equivalent.

**Progression** Employment or University course such as complementary therapies or spa management.

#### Careers after the course

- Beauty Consultant | up to £30,000
- Beauty Therapist | £12,000-£25,000+
- Massage Therapist | £20,000-£40,000 (with experience)
- Nail Technician | £12,000-£25,000
- TV Makeup Artist | £200 - 300 per day.

#### What will I study?

##### Beauty Level 2

- Anatomy and physiology
- Consultation techniques
- Facial treatments & skincare
- Gel polish application
- Health & Safety
- Infection control
- Lash and brow treatments
- Make-up application
- Manicure and pedicure services
- Skin analysis
- Waxing

##### Beauty Level 3

- Anatomy & Physiology
- Body electrical treatments
- Body massage
- Client care and communication
- Facial electrical treatments
- Individual permanent lash application
- Infection controls
- Massage using pre-blended aromatherapy oils
- Micro dermabrasion
- Monitor and maintain health and safety practice in the salon
- Working in beauty related industries

### Get on course

#### Eloise Yin

##### Level 2

##### Beauty Therapy.

**Previous School:**  
Greenbank High School.

"I have always been interested in Beauty so decided to come to College to follow my dreams. The beauty tutors here are so supportive and the facilities are really good too. We work with industry standard products in a full working salon!"

"I've really enjoyed the course; especially the practical side of it. The hands on experience in Concept, salon reception and on my work experience have really helped me to build on my confidence and has allowed me to achieve more than I ever thought I could."

"I am staying at Southport College to do the Level 3 course as I'd like to open my own salon in the future and this will help hugely."

The tutors have extensive industry experience and have worked either in television, on cruise-liners spa's, salons or on famous brand cosmetic stores.



## Nails

Students on our Beauty and Nails courses are kept up to date with the latest trends with guidance from employers and HABIA (the hair and beauty industry body).

Once full-qualified you could become a beauty therapist, specialist nail technician, massage therapist, photographic session stylist, makeup artist or salon manager.

### Why choose Southport College?

You will be based in Concept, our fully operative, working salons. You will learn all aspects of a busy working salon from the reception, to how to use industry-standard equipment.

There are regular trips and visits organised so students can find out more about working in the beauty sector. These include events such as Salon International, London and the Professional Beauty Show, Manchester where students are able to sample new products and equipment.

Our students take part in professional workshops, charity events and benefit from the industry knowledge of guest speakers and trainers.

#### Level 2 Nail Services Diploma

##### One year

**Entry requirements** Minimum one GCSE at grade 4 and two GCSEs at grade 3 (D), including English and maths or Level 1 qualification in a related subject with Level 1 Functional Skills in English and maths.

**Progression** Employment or further training in Nail Services or Beauty Therapy.

**Every applicant will need to have a course discussion and may need to provide a reference.**

#### What will I study?

- Applying and maintaining nail enhancements
- Gel polish application
- Health and safety
- Infection control
- Manicure and pedicure
- Nail art
- Promoting additional products and services

#### Careers after the course

- Beauty Consultant | up to £30,000
- Beauty Therapist | £12,000-£25,000+
- Massage Therapist | £20,000-£40,000 (with experience)
- Nail Technician | £12,000-£25,000
- TV Makeup Artist | £200-£300 per day.



Get on course

### Rebecca Aindow

Level 2  
Nail Services.

Previous School:  
Greenbank High School.

"I completed my Beauty Level 2 qualification at Southport College and wanted to further my skill set to improve my career opportunities so stayed to do the Nail Services course.

"I have really enjoyed the course; especially working with real clients in a professional environment.

"This has given me the people skills and customer service skills needed in this industry that you can't learn in a classroom!

"The staff at College are fantastic too. They really care about you as a student and do everything to support you.

"I am now progressing to Level 3 Beauty at Southport College.

I want to work in a salon to gain more experience but would really like to become self-employed in the future."

The tutors have extensive industry experience and have worked either in television, on cruise-liners spa's, salons and on famous brand cosmetic stores.





## Concept Salons - Hair & Beauty

Our Hair & Beauty students are able to gain a wealth of hands on experience with real paying clients in our Industry standard Concept Salons.

First, second and third year students provide a host of services, from a classic cut to contemporary colouring, perming or highlights, facials and nail services, all of course with support and close supervision from our highly experienced staff.

It's a fantastic way for our students to gain real salon experience and for our customers to enjoy salon treatments at a substantially reduced cost.

FOR WOMEN  
**CONCEPT**  
 FOR MEN

ELEMIS | L'ORÉAL | O·P·I

Get on  
course





# Bricklaying

Where would we be today without bricklayers?

Most of the large structures that we see around us are thanks to the skilled people who put designs into effect. They take an architect's vision and make it a reality.

Within the Liverpool City Region the demand for new homes and work places has significantly increased and as a result there is currently a shortage of qualified bricklayers. Therefore there has never been a better time to train in this much in demand sector.

Choosing bricklaying at Southport College will not only prepare you for a great career with lots of job prospects but it will also enable you to be involved in really helping to shape the region in which you live.

## Why choose Southport College?

The construction department have strong links with Sefton Council planning department, M&P Surveying and Turner Construction meaning our students may have the opportunity to undertake work placements throughout the course as well as opportunities to work on projects for real businesses

### Level 1 Bricklaying

One year

**Entry requirements** Three GCSEs at grade 2 (E) and English or maths at grade 2.

**Progression** Level 2 course in Bricklaying.

### Level 2 Bricklaying

One year

**Entry requirements** Minimum three GCSEs at grade 3 (D), including English and/or maths grade 2 or Level 1 Diploma in a related subject.

**Assessment** This course contains some externally assessed units.

**Progression** Employment or Level 3 Bricklaying or Extended Diploma in Construction, Surveying and Architecture.

### Level 3 Bricklaying

One year

**Equivalent to A-Levels**

**Entry requirements** Pass at Level 2 or equivalent in related subject and a minimum grade 4 in English and maths or equivalent.

**Progression** Employment.

Every applicant will need to have a course discussion and may need to provide a reference.

### What will I study?

- Basic cavity walling
- Complex masonry structures
- Decorative brickwork
- Health & Safety principles
- Principles of Construction
- Setting out buildings
- Solid walling

### Careers after the course

- Bricklayer | £16,000-£23,000
- Experienced bricklayers can earn up to £50,000
- Paving and block paving | £14,000-£22,000

Get on course

## Matthew Gregson

Level 2  
Bricklaying.

Previous School: Meols Cop High School.

"I chose to come to Southport College as it is close to home and offered the perfect course for me.

"I had also attended a taster day here when I was in school and really enjoyed the day.

"I have really enjoyed the practical lessons on the Bricklaying course.

"I like being in the workshop putting the skills I've learnt into practice; although I don't mind the theory lessons either!

"The tutors are helpful, kind and really knowledgeable. They have all worked in the industry and pass on their invaluable knowledge to the students.

"I am staying at Southport College to complete a Level 2 Apprenticeship in Trowel Occupations with the plan in the future to hopefully have my own building company."

Industry-standard tools and equipment are used throughout the department and all of our tutors are industry-experienced tradesmen that pass on their skills and knowledge to the students.



## Building Services Engineering

This course is an introduction to the various trades that exist within building services sector giving you a sound overview of your choice of career. If you are thinking of starting a career as a plumber, electrician or gas fitter the course provides an excellent platform to start from.

The Building Services Engineering course is a one-year introductory qualification covering four areas of building services engineering: plumbing, electrotechnical, heating/ventilating, refrigeration and air conditioning.

### Why choose Southport College?

All of our tutors are industry-experienced working as successful tradespeople for a number of years.

The College has excellent facilities with specially designed workshops where students can work independently or as part of a team and we ensure students are kept up-to-date with the latest industry developments.

#### Level 3 Access to Building Services Engineering

##### Two years

**Entry requirements** Minimum one GCSE at grade 4 and two GCSEs at grade 3 (D), including English and maths or Level 1 Diploma in a related subject.

**Progression** Minimum one GCSE at grade 4 and two GCSEs at grade 3 (D), including English and maths or Level 1 Diploma in a related subject.

**Every applicant will need to have a course discussion and may need to provide a reference.**

#### What will I study?

You will cover four areas of building services engineering:

- Electrotechnical
- Heating and ventilating
- Plumbing
- Refrigeration and air conditioning

You will also study:

- Environmental protection
- Renewable energy and the conservation of fuel and power
- Safe working practices
- The science of building services

#### Careers after the course

This course prepares you to start other qualifications and will give you a head start in other Level 2 courses including:

- Electrical installation
- Gas
- Heating & Ventilation
- Plumbing

We have strong links with local employers and offer Apprenticeships in Plumbing & Heating and Electrical Installation.

Get on course

### Mollie Portnall

Level 2  
Building Services  
Engineering.

Previous School:  
Greenbank High School.

"I chose the BSE course at Southport College as it's hands on and practical; I didn't want to be sat in a classroom all day!

"I have really enjoyed the practical lessons, especially when we have made something such as copper and steel frames.

"The course gives you lots of knowledge about the different areas of the industry, electrical, gas and plumbing, meaning you have lots of progression opportunities once you've finished.

"I have now moved on to do a Level 2 Apprenticeship with EFT with the hope to continue working with them in the electrical systems department in the future."



## Business

Do you aspire to work in management or imagine yourself as a budding entrepreneur? Are you interested in current affairs and the world of business?

In today's business climate there has never been a better time to study this topic. Here at Southport College you will gain an understanding of all elements involved in running a business as well as the detail and depth of knowledge to start a career.

### Why choose Southport College?

We have industry-experienced tutors who have worked in various business roles.

Students have opportunities to put their knowledge and skills into practice by producing fundraising ideas to raise money for non-profit organisations.

There is an extended placement for all business courses, where students are out on placement, either in blocks, or one day a week, all year.

There are chances to be involved in realistic experiences with mock events such as Dragon's Den, where students can present their ideas to representatives from the business world.

#### Level 2 Diploma in Skills for Business with an additional Level 1 Technical Award in Business and Enterprise One year

**Entry requirements** Minimum one GCSE at grade 4 and 2 GCSEs at grade 3 (D) including English and maths or Level 1 Diploma in a related subject and Level 1 Functional Skills in English and maths.

**Progression** Apprenticeship or Level 3 Business.

#### Level 3 Business Extended Diploma

This course is available at our partner college, King George V at: [www.kgv.ac.uk](http://www.kgv.ac.uk).

Every applicant will need to have a course discussion and may need to provide a reference.

#### What will I study?

- Business culture and responsibilities
- Communication in business
- Delivering customer service
- Performance management
- Producing business documents
- Project management

#### Careers after the course

- Accounting Technician | £22,000-£32,000
- Buyer | £18,000-£33,000
- Careers after the course
- Chartered Accountant | £26,000-£50,000
- Marketing Manager | £25,000-£50,000
- Retail Manager | £21,000-£34,000



Tutors regularly organise trips and visits to local, national and international businesses, allowing students to gain more knowledge and experiences from the business world including Land Rover, The Trafford Centre and Blackpool Pleasure Beach, Disneyland Paris.

Get on course

### Jennifer Salcedo

Level 3 Business and Enterprise Extended Diploma.

Previous School: Greenbank High School.

"I am a young carer so coming to a college that was close to home was really important to me and Southport College offered the exact course I wanted so seemed the obvious choice. I'm really glad I chose to come here!

"The staff are really nice and helpful and are very knowledgeable about the subject with lots of industry experience and the BTEC course is great!

"The support I have received as a young carer has been brilliant too – I wouldn't have completed without the support network I've had at the College!

"I am now doing a Level 4 Apprenticeship in Business Administration and would really like to become an accountant in the future."



# Childcare

Children are our country's future so it is imperative that the care offered is of a very high standard. This means that only those qualified and with experience will be successful in gaining a career in the industry. A career in childcare requires careful planning and preparation, a wide skill set and the ability to work with others.

Many of our childcare students move straight into employment in local nurseries and early years settings. Some choose to use the experience they've gained to work overseas as au pairs, nannies and childcare agency staff. Other students progress on to higher education studying degrees such as Early Years, Education Studies and Children, Young People and their Services.

## Why choose Southport College?

Our Childcare department has been part of a £2.6million refurbishment creating one of the most modern learning environments in the region, giving students unique learning spaces with simulated nurseries, state-of-the-art facilities and open plan work spaces with industry-specific equipment to practice skills, a designated playroom and realistic baby simulators.

Our tutors all have extensive industry knowledge from previous employment in a broad range of roles within the sector such as nursing, play worker, nursery nurse, child minder, police officer and teacher.

### Level 1 Childcare (Ambition)

One year

**Entry requirements** Minimum one GCSE at grade 3 (E), two GCSEs at grade 2 (F) and English and maths at grade 1.

**Progression** Related Level 2 course with English and maths entry requirements achieved.

### Level 2 Intro to Early Years Education

One year

**Entry requirements** Minimum one GCSE at grade 4 and two GCSEs at grade 3 (D) including English and maths or Level 1 Diploma in a related subject and Level 1 Functional Skills in English and maths.

**Progression** Related Level 3 course with English and maths entry requirements achieved.

### Level 3 Diploma in Early Years and Care: The Early Years Educator Equivalent to A-Levels (up to 168 UCAS points)

Two years

**Entry requirements** Five GCSEs at grade 9-4 (A\*- C) including maths and/or English or pass/merit in a related Level 2 Extended Certificate and English and maths at Level 2.

**Assessment** This course contains some externally assessed units.

**Progression** Employment or University. This course will also give you a license to practice.

### Level 3 Diploma Children's Workforce

One year

**Entry requirements** Five GCSEs at grade 9-4 (A\*- C) including maths and/or English or pass/merit in a related Level 2 Extended Certificate and English and maths at Level 2.

**Progression** This course leads directly into employment for anyone who wants to work as an early years practitioner or teaching assistant/related role and provides you with a license to practice.

### What will I study?

- Being a reflective practitioner
- Children's development
- Children's health and care
- Children's literacy and mathematics
- Children's play and development
- Health & safety
- International perspectives of early years education
- Legislation and current frameworks
- Observation and assessment of children
- Personal and professional practice
- Preparing children for school
- Principles for early years provision
- Safeguarding
- Working in partnership

### Careers after the course

- Early Years Practitioner | £17,000-£22,000
- Early Years Teacher | £18,000-£30,000
- Paediatric Nurse | £22,000-£35,000
- Primary School Teacher | £19,000-£28,000
- Youth Worker | £19,000-£30,000

**Every applicant will need to have a course discussion and may need to provide a reference.**

Get on course

## Ellis Dales

Level 3

Diploma in Early Years and Care:  
The Early Years Educator.

Previous School:  
Christ the King Catholic High School.

"After looking at other colleges, I chose to come to Southport College as the facilities including a working nursery are excellent.

"The staff are really supportive and friendly too.

"The Early Years Educator course is great. The placement weeks have been amazing; I went to Churchtown Primary school and YMCA nursery, and learning from staff on the "job has been priceless.

"We also have the opportunity to work with children from local nurseries as they come into College once a week. I wouldn't have been able to get these real life working experiences doing A-Levels!

"The course at Southport College has given me everything I need to progress onto my chosen career path.

"Next, I am going to Edgehill University to study Primary Teaching."



Regular work placements are arranged for students to develop their knowledge and skills.



## Computing & IT

Computing and IT skills are at the centre of everyday life and found in almost all industries and businesses across the world. There are a broad range of specialist areas including programming, web development, network management, cyber security, applications development, telecommunications, internet service provision, computer gaming and more.

The Digital Tech sector is expanding 2.6 times faster than the rest of the UK economy and is worth more than £184 billion. Technology moves so fast that Digital Tech companies are always looking for highly skilled employees with the most up-to-date knowledge and understanding. This means that studying an IT or computing course is very desirable, with good career opportunities.

### Why choose Southport College?

Our Computing and IT department has been part of a £1.3 million refurbishment introducing new, modern teaching and learning environments and well equipped technology workshop.

We provide access to live briefs so lessons are not limited to the classroom and we offer students the opportunity to visit places like Disneyland Paris, Museum of Science and Industry, Manchester, CAE Technology Services, the Retro Games Arcade and the 'What next?' careers fair at the Liverpool Exhibition Centre.

Our tutors still work in the industry, meaning they are up to date with all the latest developments and can pass this on to our students.

#### Level 2 ICT

##### One year

**Entry requirements** Minimum one GCSE at grade 4 and two GCSEs at grade 3 (D) including English and maths or Level 1 Diploma in related subject and Level 1 English language and maths.

**Progression** With a merit, Level 3 Extended Diploma courses such as Computing or an Apprenticeship.

#### Level 3 Computing Extended Diploma Equivalent to Three A-Levels (up to 168 UCAS points)

##### Two years

**Entry requirements** Five GCSEs at grade 9-4 (A\*- C) including maths and/or English or pass/merit in a related Level 2 Extended Certificate and English and maths at Level 2.

**Progression** Employment or University.

**Assessment** This course contains some externally assessed units.

Every applicant will need to have a course discussion and may need to provide a reference.

#### What will I study?

- Database design
- Digital graphics
- Network design
- Software development
- Technical support
- Website design

#### Careers after the course

- IT Technician | £18,000-£30,000
- Network Engineer | £18,000-£40,00
- Systems Analyst | £20,000-£45,000
- Web Designer | £22,000-£30,000

Get on  
course

### Anna Johnson

#### Level 3

Computer Science Extended Diploma.

Previous School:  
Sacred Heart Catholic College.

"I had heard really positive comments about Southport College before I joined which is why I applied to study here.

"The Computer Science course covers a wide variety of topics and has helped me to decide what career I would like to follow in the future.

"The staff here are great. They are always happy to help and really know their stuff. The facilities are amazing too.

"We use current and up to date software with plenty of equipment to use too.

"After this, I would like to go to University to study Computer Security."

Our strong links with business and universities mean students enjoy talks and workshops from international companies including Google and Microsoft.



# Construction Surveying & Architecture

Ever looked up at the buildings around you and thought, wow that's pretty impressive? Well these buildings are an immense collaboration between the designers or architects, surveyors and the builders who physically put a structure together.

Did you know that people trained in architecture and surveying are some of the most sought after in the Liverpool City Region and these areas have recently been identified as having a skills shortage locally?

That means there's never been a better time to train in Construction, Surveying and Architecture as there are so many job opportunities to be grasped.

We as a College are proud to offer this course and focused on delivering an education that will shape the future of our local region and the built environment sector. You could contribute to the improvement of not only building technologies but also people's lives as a whole.

## Why choose Southport College?

The construction department have strong links with Sefton Council planning department, M&P Surveying and Turner Construction meaning our students may have opportunities to work on projects for real businesses as well as the opportunity to take place in work placements throughout the course.

Industry-standard tools and equipment including realistic CAD suite and computer rooms are used throughout the department and all of our tutors are Industry-experienced tradesmen and pass on their skills and knowledge to the students.

**Level 3 Construction, Surveying & Architecture**  
Equivalent to three A-Levels  
(up to 168 UCAS points)

Two years

**Entry requirements** Five GCSEs at grade 9-4 (A\*- C) including English and/or maths or pass/merit in a related Level 2 Extended Certificate and English and maths at Level 2.  
**Progression** University or employment.

Every applicant will need to have a course discussion and may need to provide a reference.

### What will I study?

- CAD
- Civil engineering
- Highway construction & maintenance
- Project management
- Surveying
- Sustainable construction

### Careers after the course

- Architect | £19,000-£43,000
- Civil Engineering | £14,000-£35,000
- Construction Project Manager | £27,000-£45,000
- Quantity Surveyor | £20,000-£45,000
- Site Manager | £27,000-£45,000



**Want to know more about Construction, Surveying & Architecture?**

Scan the QR Code above and then click on an option and you will be taken to an overview of possibilities within the industry.

Get on course

## Grace Webb

**Level 3**  
Construction, Surveying  
and Architecture  
Extended Diploma.

**Previous School:** Maricourt  
RC High School.

"I chose Southport College as it was the best college with the great facilities.

"I travel quite far to get here using my free travel pass, but it is definitely worth it.

"I want to be an architect so this course was perfect for me. I think the BTEC is a much better route into this type of career as it focuses on the industry much more and allows you to gain practical skills as well as knowledge.

"I particularly enjoyed the opportunities we had to go out to building sites to gain experience of what it is like out in the industry.

"I am now studying Architecture at the University of Liverpool.

"I feel like my time at Southport College prepared me well. I know so much more about the whole construction industry now, which will help massively in my future career."



**CLAYTON ARCHITECTURE LIMITED**  
Architectural Design | Interior Design | Planning Permission | Building Regulations  
arb RIBA #

Working alongside Southport College and helping their students into the Construction, Surveying and Architecture industry has proven to be extremely successful, it has already helped to

guide a number of students towards the correct higher education/University course.

The introduction into the Architecture industry that we are able to provide gives the students an invaluable experience and provides them with the opportunity to work on live projects at an RIBA and ARB accredited Architecture Practice.



# Creative Media Production & Photography

The media industry is vast and lucrative with many avenues for employment. The Level 3 UAL Extended Diploma is a rigorous specialist vocational programme, with assignments that are based on realistic industry scenarios. The course covers a range of disciplines designed to maximise the learners' skills base & self confidence and improve employability.

## Why choose Southport College?

We have the best facilities in the area: fully equipped fashion & print workshops, state of the Mac suites, photography and TV studios. You learn through "live" work-based projects and scenarios with the chance to try out the roles of director, producer, editor, camera operator and stills photographer. You will study subjects that incorporate Film/TV and Photography and develop your knowledge and professionalism in a wide variety of disciplines. You will have access to our professional TV and Photography Studios, as well as a range of specialist camera equipment. You will develop your technical and creative skills to create modern, engaging content and by the end you will have compiled a portfolio of work to use to progress to University or to work in the media industry.

### Level 2 Creative Media Production

#### Two years

**Entry requirements** Minimum one GCSE at grade 4 and two GCSEs at grade 3 (D), including English and maths or Level 1 Diploma in related subject and Level 1 English language and maths.

**Progression** Level 3 course such as Creative Media Production, Graphic Design, or Games and Animation or Apprenticeship.

#### Year One

**Unit 1** Introduction to media processes and technical skills

**Unit 2** Introduction to design and research skills

**Unit 3** Introduction to professional practice

**Unit 4** Critical and contextual awareness

**Unit 5** Investigating audio production and technology

**Unit 6** Investigating visual production and technology

**Unit 7** Investigating interactive production and technology

**Unit 8** Developing a production project

#### Year Two

**Unit 9** Characteristics and contexts

**Unit 10** Engaging with an audience

**Unit 11** Preparing for progression

**Unit 12** Specialist study

**Unit 13** Extended project

### Level 3 Creative Media Production & Photography

Equivalent to three A-Levels (up to 168 UCAS points)

#### Two years

**Entry requirements** Five GCSEs at grade 9-4 (A\*- C) including maths and/or English or pass/merit in a related Level 2 Extended Certificate and English and maths at Level 2.

**Progression** University, Level 4 Higher National Certificate in Photography (HNC) @ Southport College University Centre, Employment in Creative Media industry.

### What will I study?

This varied and very practical course includes:

- Creating a short film
- Desktop Publishing
- Making a music video
- Multi Camera Production
- Narrative Photography
- TV Advertising
- Website production

### Creative Portraiture & Headshots:

- Final Major Project:

### Careers after the course

- Media Producer £18,000-£55,000
- Photographer £18,000-£50,000
- Sound Engineer £13,000-£40,000
- Trainee Camera person £18,000-£23,000

Get on course

## Katie Brindle

### Level 3

Creative Media Production Extended Diploma.

Previous School: Stanley High School.

"I attended a taster day at Southport College with my school and loved it.

"The facilities really impressed me and the BTEC route seemed a more manageable way for me to get where I wanted in the future.

"I have really enjoyed the Creative Media course, especially the opportunities it's opened up for me. I have had the chance to get involved in extra projects such as filming our University Centre Graduation ceremony and also our College Soap Opera 'Baffled?'

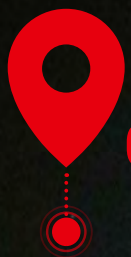
"One of the reasons I chose the College was the amazing facilities available to students. Being able to use any camera, lens etc. in or out of College, is great!

"After this course, I am going to Manchester Metropolitan University to study PR and Marketing."

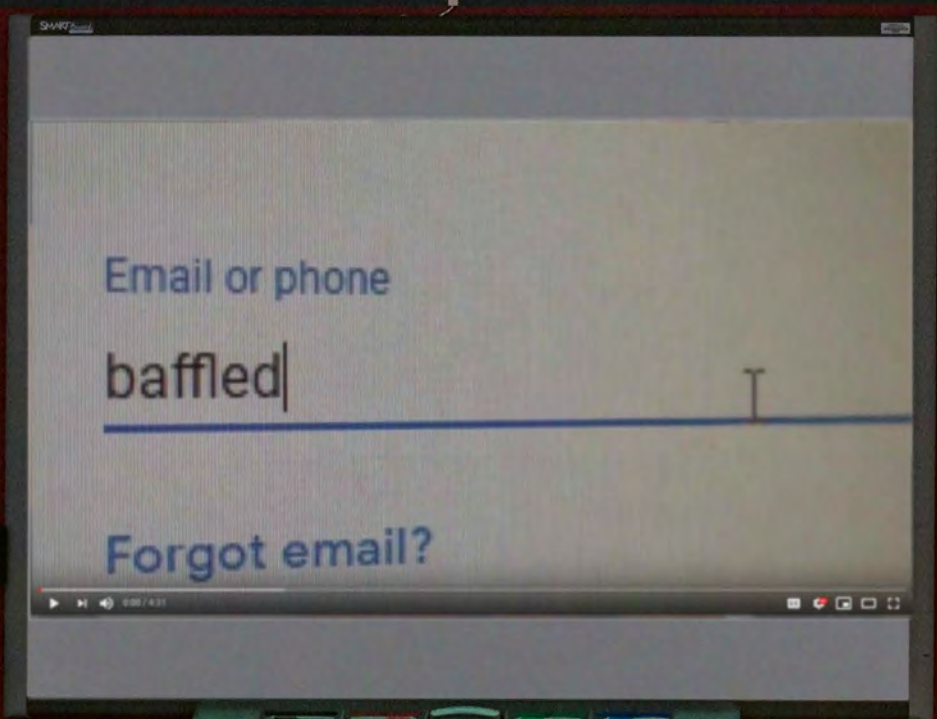


Students regularly attend trips to develop their skills and knowledge of the industry. Recent trips include: Berlin, Bradford Media Museum, Media City in Salford and the Photography Show in Birmingham.





## Creative Media Production & Photography

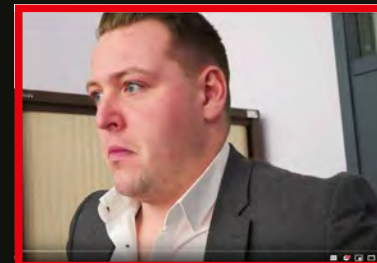


**Baffled?** A soap opera set in an internet news company office, documenting the loves, secrets and rivalries of its young journalists. Developed, written and produced by Southport College media students and starring Southport College performing arts students.

Get on course

### Baffled? Episode 1

Soap opera set in an internet news company office, documenting the loves, secrets and rivalries of its young journalists.



### Baffled? Episode 5

Is Mike and Ellie's marriage really as strong as she thinks?

### Baffled? Episode 2

What is going on between Mike and Savannah?

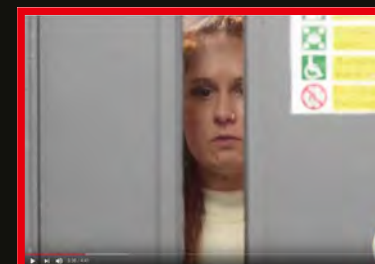
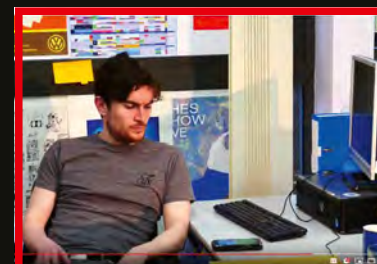


### Baffled? Episode 6

Has Savannah been dumped? Will anyone ever believe Trish and is Jen's secret admirer really a handsome stranger?

### Baffled? Episode 3

Will Mike's sweet talk work on Ellie and why is Ollie so averse to working closely with Lewis?



### Baffled? Episode 7

Is Ellie right to be worried? Why is Lily secretly filming everyone?

### Baffled? Episode 4

Is Ellie right to think Savannah can't come between her and Mike?



### Baffled? Episode 8

The final exciting instalment. Will Ollie and Lewis stop pretending to hate each other? How will the office cope with losing one of their own and will Ellie finally see Mike's true colours?



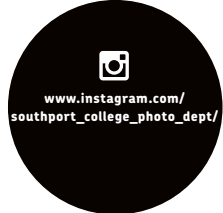
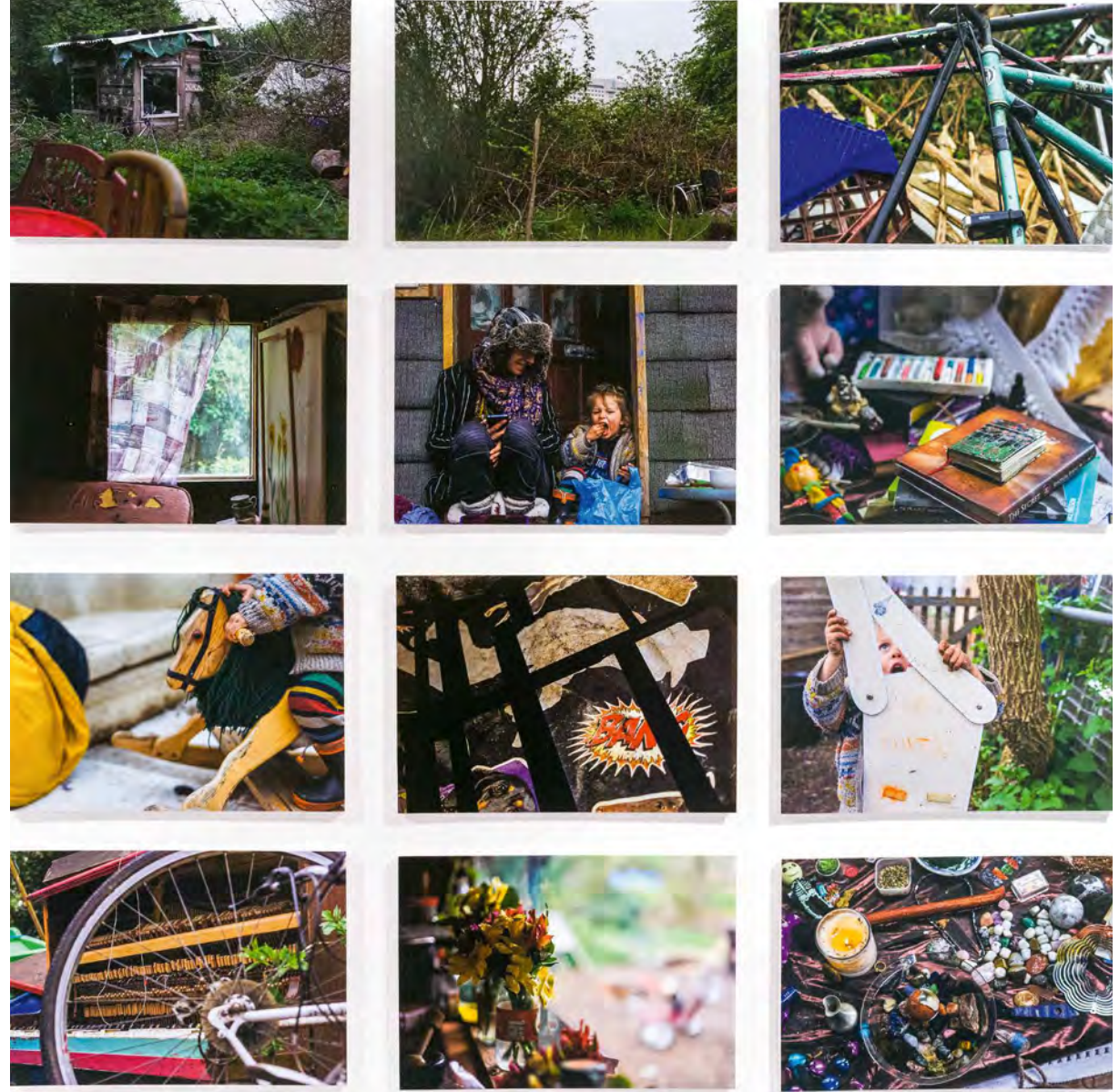


# Creative Media Production & Photography



The College has fantastic, extensive facilities including a darkroom and photography studios for students to use.

Get on course







## Photography Competition

Our students are encouraged to enter into local, national and international competitions. This pushes them to produce high standards of work resulting in prestigious awards. This helps to raise the students profile and strengthen their portfolio.



### **Claudia Divito | Royal Academy Summer Exhibition**

Shortlisted from over 17000 entries, Claudia's 'Distorted Still Life' was hand-picked by a panel of passionate and award-winning artists and arts professionals who judged and curated the submissions to feature in the 2020 Young Artists Summer Exhibition. Claudia's photography work has been displayed amongst the world's most well-known artists, as well as other students and emerging talents.

Get on course

### Will Byrne

Level 3  
Photography  
Extended Diploma.

Previous School:  
Burscough Priory Academy.

"I've always had cameras and taken photos since a young age and always knew I wanted to become a photographer in the future.

"The BTEC course is the perfect way to get me to this career so was the obvious option for me.

"I have loved the freedom you get as a student on this course; your vision is your vision. The tutors are lovely and supportive and will help you to achieve your goals without telling you what to do and the facilities are amazing.

"The photo studio and dark room are great and having the Mac Suite for editing is perfect. I have learnt so much on the course from pin hole to modern, digital photography as well as all the skills and knowledge I need to be successful in the future.

"I am going to the University of Arts London to do fashion photography and I plan to travel the world as a fashion photographer doing big shoots for magazines, designers etc."

Regular trips provide students with inspiration for their portfolio work. In the past students have travelled to Berlin, Bradford Media Museum, Media City in Salford and The Photography Show in Birmingham.



# Electrical Installation

The electrotechnical industry is responsible for electrical installation in all types of buildings including data-cabling and fibre optics. Electrical installation is at the forefront of improving the energy efficiency of the UK's homes and businesses. It is also developing new technologies to meet the demand for renewable energy systems. Our courses provide you with the regulation knowledge, practical skills and the science required for electrical installation work, combining workshop sessions with theory lessons.

## Why choose Southport College?

Our courses are recognised in the electrical installation industry and students have the opportunity to become fully qualified as an approved electrician through the Competent Persons Scheme (CPS).

Our purpose-built workshops are equipped with the latest equipment to prepare students for working in the industry and students are regularly kept up to date with the latest industry developments.

### Level 2 Electrical Installation

#### One year

**Entry requirements** Minimum four GCSEs at grade 3 or above including English at grade 3 and maths at grade 4 or Level 1 qualification in a related subject.

**Progression** Level 3 Electrical Installation or Higher Apprenticeship.

### Level 3 Electrical Installation

#### One year

#### Equivalent to A-Levels

**Entry requirements** Pass at Level 2 Electrical Installation and a minimum grade 4 in maths or equivalent.

**Progression** Employment, Advanced Apprenticeship, HND, Foundation Degree or further study such as 18th Edition.

**Every applicant will need to have a course discussion and may need to provide a reference.**

### What will I study?

- Basic installation
- Circuit design
- Electrical principles
- Electrotechnology
- Fault diagnosis and repair
- Inspection testing and commissioning

### Careers after the course

- Many qualified electricians set up their own businesses and experienced workers can earn upwards of £35,000.



The electrical installation department have strong industry links with Fluke, Brightsparks, Cooperheat, Screwfix, Denmans, Hager, Interserve and NICEIC.

Get on course

## Borys Ryan

### Level 2 Electrical Installation

**Previous School:**  
King George V.

"I have really enjoyed studying at Southport College. I wanted to get the practical hands on experience in electrical installation and this course was perfect!

"I have loved the practical learning as well as the positive atmosphere around the College.

"The staff are great; very cheerful and encouraging and the facilities in the electrical department are really good too.

"The individual learning spaces for each student are a good size and have really helped me to learn a lot about the trade.

"I am going to stay at Southport College to study the Level 3 Electrical Installation course.

"Doing this course has confirmed that I definitely want to become an electrician in the future!"



# Engineering

The role of the engineer is to problem-solve. Their fields of expertise range from engineering systems at the molecular level (nanotechnology) to the construction of the world's largest structures.

The list of engineering disciplines includes electrical, electronic, mechanical, aeronautical, civil, control and automotive and nearly 20% of the UK workforce consists of Engineers. Engineering students have numerous career options to choose from. At Southport College, our courses focus on mechanical and electronic engineering. Typically, you could be in a CAD (Computer Aided Design) suite planning your designs one day then manufacturing your designs in the fully equipped workshop.

## Why choose Southport College?

Our Engineering department has benefited from a £1.3 million refurbishment project providing students with a new, modern e-learning classroom and an extended/refurbished workshop housing £150,000 of new equipment.

All of our tutors are industry-experienced engineers who pass on their wealth of skills and knowledge to students using industry-standard machines and equipment. A variety of teaching methods and resources are used in both the workshops and the classrooms to help students prepare for work in the industry.

### Level 2 Engineering One year

**Entry requirements** Minimum one GCSE at grade 4 and two GCSEs at grade 3 (D) including English and maths or Level 1 qualification in a related subject and Level 1 Functional Skills.

**Progression** Level 3 Engineering, Level 2 Electrical Installation, Level 2 Vehicle Engineering or employment/Advanced Apprenticeship.

### Level 3 Engineering Extended Diploma Two years

**Equivalent to three A-Levels  
(up to 168 UCAS points)**

**Entry requirements** Five GCSEs at grade 9-4 (A\*- C) including maths or Pass in a related Level 2 Extended Certificate and English and maths at Level 2.

**Assessment** This course contains some externally assessed units. Students will also be required to undertake a placement in industry.

**Progression** Employment, Higher Apprenticeship or degree on a University course such as HNC Engineering at Southport College.

**Every applicant will need to have a course discussion and may need to provide a reference.**

### What will I study?

- Auto CAD
- Computerised Numerical control (CNC)
- Designing and testing electronic circuits
- Developing and coding intelligent electronic systems
- Fabrication
- Maths
- Traditional conventional machining

**In order to experience a real working environment, students will visit international companies such as:**

- BAE Systems Salmesbury (aeronautics)
- BAE Systems Barrow-in-Furness (nuclear submarines)
- Leyland Trucks

**Other enrichment activities include:**

- Go-karting in Burscough
- Museum of Science and Industry, Manchester
- West Lancashire Steam Railway

### Careers after the course

- Aerospace Engineer | £20,000-£40,000
- Electronic Engineer | £21,000-£55,000
- Mechanical Engineer | £22,000-£50,000
- Welder | £16,000-£33,000

Get on  
course

## Luke Frackelton

Level 3  
Engineering  
Extended Diploma.

Previous School:  
Range High School.

"I visited an Open Evening at Southport College and decided it was the college for me. I wanted to do a BTEC in Engineering and the course here is perfect!"

"I am a very practical learner so the practical side of the course has been really enjoyable and has helped me to solidify my learning.

"The staff are always happy and helpful and the facilities are the best around!"

"This a great college offering some great opportunities for Engineering students.

"I am very happy that I chose to come here.

"I am now at Liverpool John Moores University studying Mechanical Engineering."

We have the latest S-O-T-A electronic suite to enable our students to design and develop modern intelligent circuits.





## Forensic & Criminal Investigation

The Forensic & Criminal Investigation course at Southport College does not just give you the opportunity to pursue a career in science or forensics it can also lead to a wide range of related careers in criminal behaviour, psychology and policing.

For many jobs leading on from this course you will need to have a degree level qualification and your career choices will depend on your area of interest and the degree course you choose to take.

There are a wide range of potential career choices including crime scene investigator, analytical chemist, toxicologist, police officer, criminal intelligence analyst, revenue & customs officer, youth offending team, crime prevention adviser and more.

### Why choose Southport College?

Our Forensic & Criminal Investigation course can lead directly onto the policing degrees required to enter the police force.

Our Science department has recently expanded to include a brand new additional science laboratory that will benefit students on the Forensic & Criminal Investigation course.

Southport College is well established with excellent facilities and continuously high success rates through having the longest running forensic course in the area.

We have an excellent teaching environment with the use of specialist laboratories and a wide range of specialist research resources in our library.

We have access to mock crime scenes at various locations to put what you have learned into practice. These are also used for assessments.

#### Level 3 Forensic & Criminal Investigation Extended Diploma

Equivalent to three A-Levels (up to 168 UCAS points)

Two years

**Entry requirements** Five GCSEs at grade 9-4 (A\*- C) including English and/or maths and science or pass/merit in a related Level 2 Extended Certificate and English and/or maths at Level 2.

**Progression** University or employment.

**Every applicant will need to be interviewed for their chosen course and may need to provide a reference.**

#### What will I study?

- Applications of criminology
- Criminal and forensic psychology
- Criminal investigation procedures
- Forensic investigation procedures

#### Careers after the course

- Crime Scene Investigator | £16,000-£33,000
- Criminal Intelligence Analyst | £25,000-£40,000
- Forensic Psychologist | £20,000-£70,000
- Police Officer | £20,000-£40,000
- Probation Officer | £22,000-£39,000
- Toxicologist | £20,000-£35,000

We work with Merseyside Constabulary and alongside professions of the Criminal Justice system to support our teaching and ensure our forensic programme is realistic and up to date.

Get on  
course

### Elliot Campbell

Level 3  
Forensic and Criminal  
Investigations Extended  
Diploma.

Previous School:  
Range High School.

"From the moment I attended an Open evening here, I loved Southport College.

"The location is really good being in the town centre and here is the only place I'd seen that offer a forensics course.

"I have always wanted to work in the forensics industry so it was perfect for me.

"The modules on this course are great and allow you to explore the subject really well and the lessons are very interactive with lots of practical experiences.

"The facilities are fab too; especially the amazing crime scene room.

"The course at Southport College teaches you about the subject and is an amazing starting point for University. It covers such a wide range of topics and is great if you are unsure of what you want to progress onto.

"I am now at UCLan studying Criminology and Criminal Investigations and once I've finished my degree I want to join the police."



## Games Design

Games Design is a fast-growing industry that offers many exciting and creative career opportunities. E-sports and virtual reality are two expanding areas and in the UK virtual reality is the fastest growing entertainment and media sector. The UK video games industry, contributes around £3 billion to the economy, employs nearly 50,000 people and boasts some of the finest video games studios globally, many of which are situated in the North West.

### Why choose Southport College?

We were the first college in the North West to offer this course so you will be joining a course with a fantastic reputation and excellent facilities.

You will learn many transferable skills from the Games Design course including project management, pitching and communicating, audio editing and Photoshop techniques.

Students will use industry-based software to build 2D and 3D games to create engaging and enjoyable experiences.

#### Level 3 Games Design Extended Diploma

Equivalent to Three A-Levels

(up to 168 UCAS points)

Two years

**Entry requirements** Five GCSEs at grade 9-4 (A\*- C) including maths and/or English or merit in a related Level 2 Extended Certificate and maths and/or English at Level 2.

**Progression** Employment or University.

**Every applicant will need to have a course discussion and may need to provide a reference. Applicants will also be required to show a good portfolio of work.**

#### What will I study?

- 📍 3D modelling
- 📍 Audio editing
- 📍 Communication and Team Building
- 📍 Game construction
- 📍 Games platforms
- 📍 Photoshop
- 📍 Project management
- 📍 Quality assurance
- 📍 Storyboarding

#### Careers after the course

- 📍 Animator | £20,000-£40,000
- 📍 Character Artist | £18,000-£40,000
- 📍 Games Designer | £25,000-£50,000
- 📍 Games Tester | £12,000-£30,000
- 📍 Project Manager | £18,000-£45,000

A number of our former students have gone on to work at major companies on titles such as Grand Theft Auto, Lego Hobbit and Carmageddon Max Damage.

Get on course

### Tia Hardy

Level 3  
Games Design  
Extended Diploma.

Previous School:  
Christ The King Catholic  
High School.

"I chose the Games Design course at Southport College as it looked like a really interesting and exciting course. I wanted to study something I enjoy, and gaming has always been one of my hobbies.

"I really like the practical aspect of the course throughout the year.

"I have designed and produced my own game; 'Escape a mansion'.

"The course has prepared me for what to expect in the industry and has given me a good ground knowledge for what I want to go into in the future.

"I am now at Manchester Metropolitan University now studying Creative Writing."





# Games Design - The task of designing and building a computer game is a complex and challenging process

Get on course



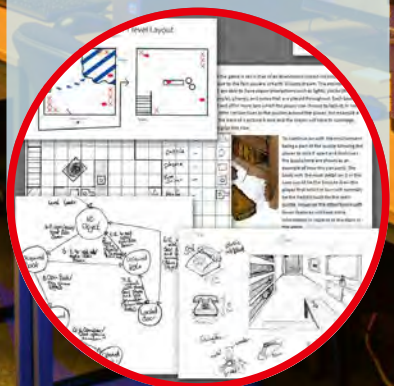
**Using imagination and practical research** to create ideas for characters and environments; experimenting with different designs.



**Producing high quality imagery** to illustrate what the finished game will look like. These illustrations will be used to 'pitch' the game idea to a sponsor.



**Writing a formal document** which explains how the game should be constructed, including animation storyboards and rules for gameplay and scoring systems.



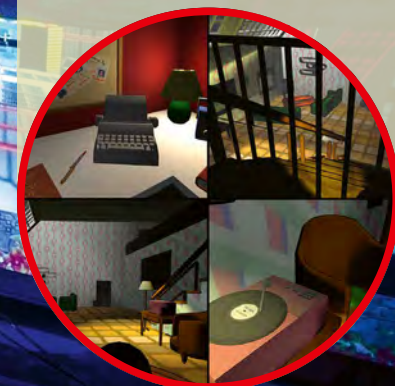
**Building 3D assets** for the game - characters, objects and environment. Applying coloured textures, embedding bones and animating them.



**Placing assets into a 'game engine'** and creating rules to describe how they move and interact.



**Packaging and producing** a finished product.







## Graphic Design

Go to college or gain work experience? On the Graphic Design and Illustration course at Southport College you will do both. The course is clearly focused on future progression, delivering real industry practice with the aim of learners progressing to University, directly into industry or on to a modern Apprenticeship.

During the course you will develop a broad portfolio of graphics, product design, animation, photography, printmaking and illustration to enable you to progress to a diverse range of career pathways, whilst also developing your own specialism.

### Why choose Southport College?

Our team has close links with industry professionals who are regularly invited into College to deliver presentations and workshops with students. 50% of projects on the course are 'live' where students work to real-life briefs for businesses and organisations for brand development, campaigns, issue-based projects, international competitions and design.

We have excellent facilities and resources including a fully equipped design studio, professional gallery space, Apple Mac Suite, photography, film, printmaking and TV studio, industry-standard software and a 3D printer, A2 Lasercutter, sublimation printing and vinyl cutting.

#### Level 3 UAL Applied General Extended Diploma in Graphics

Equivalent to three A-Levels (up to 168 UCAS points)

Two years

**Entry requirements** Five GCSEs at grade 9-4 (A\*- C) including English and/or maths or pass/merit in a related Level 2 Extended Certificate and English and maths at Level 2.

**Progression** University or employment.

**Every applicant will need to have a course discussion and may need to provide a reference. Applicants will also be required to show a good portfolio of work.**

#### What will I study?

- Advertising/Marketing
- Animation
- Branding
- Drawing
- Illustration
- Image manipulation
- Painting
- Photography
- Printmaking
- Traditional and computer-based graphics and illustration
- Typography
- Website visual design

#### Careers after the course

- Animator | £14,000-£36,000
- Graphic Designer | £17,000-£30,000
- Illustrator | £14,000-£40,000
- Interior Designer | £18,000-£45,000
- Marketing/Advertising | £25,000-£50,000
- Photographer | £18,000-£50,000
- Product Designer | £17,000-£40,000
- Web Designer | £22,000-£30,000

Get on course

### Matthew Latham

Level 3 Graphic Design Extended Diploma.

Previous School: Ormskirk School.

"Southport College was much better than the other colleges I had visited.

"The facilities and resources were great with industry standard equipment. It's like a specialist Art college!

"I have been doing bits of graphic design since I was young and always loved it. I studied it for GCSE so always knew I wanted to continue it at college.

"I have really enjoyed the freedom you get on this course. You can work at your own pace and tailor your projects to your own interests.

"The tutors are really friendly and are always there to help. They know so much about the industry and pass all that knowledge on!

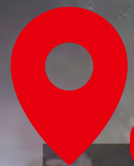
"I don't think I could have gained a better education than I have here!

"I am now at UCLan studying BA Graphic Design."

We deliver the prestigious UAL (University of the Arts London) qualifications, which are specially designed to be relevant to the needs of the creative arts industry.







# Graphic Design

**THE RAVEN**  
BY EDGAR ALLAN POE

Once upon a midnight dreary, while I pondered, weak and weary,  
Over many a quaint and curious volume of forgotten lore—  
While I nodded, nearly napping, suddenly there came a tapping,  
As of some one gently rapping, rapping at my chamber door—  
"Tis some visitor," I muttered, "tapping at my chamber door—  
Only this and nothing more!"

And the separate and sinister wrangle of her shaggy hair  
Caper'd like a wild fire among the shingles overhead,  
From my books on the floor—sooner I had caught in horror  
For the rare and radiant maiden whom the angels name Lenore—  
Than close here for evermore.

And the silken, sad, uncertain rustling of each purple curtain  
Thrilled me—filled me with fantastic terrors never felt before,  
So that now, to still the beating of my heart, I soar repeating  
Some late visitor carrying outrage at my chamber door—  
"Tis she and nothing more!"

Presently my soul grew stronger than ever  
As I beheld round me in my single room,  
"She" said, "and I, too, 'Midnight, with  
your forgiveness I implore,  
But the fact is I was napping,  
And so gently you came rapping,  
And so faintly you came tapping,  
As if to stealthily I had heard you,  
Close the door but not to open it,  
Here I stand with all my soul  
For the rare and radiant maiden whom  
The angels name Lenore—  
Darkness there and nothing more!"

**DRINK FROM ME  
AND LIVE  
FOREVER THE VAMPIRE!**



starting  
**Johnny Depp & Kirsten Dunst**  
Costume Designer: **Tom Fiddes** | Hair: **Brad Pitt** | Makeup: **Christina Ricci** | Production Designer: **Helena Bonham Carter**  
Story and Screenplay by: **Bram Stoker & Jim Hazz** | Directed by: **Guillermo Del Toro**  
Produced by: **Richard D. Zanuck & John Logan**



**Get on  
course**



Just a small sample of our students exciting creative work.



## Hairdressing

Working as a hairdresser can be an exciting and creative career where you could find yourself working just about anywhere, including salons, hotels, cruise ships, film and TV sets, private homes or working for large companies such as L’Oreal or Bed Head. You could become a salon stylist, specialist in colour or extensions, session stylist or open/manage a salon.

### Why choose Southport College?

As a Hairdressing student you would be based in ‘Concept’, our fully operative hair and beauty salons, with paying clients. You will learn all aspects of a busy working salon and how to use industry-standard equipment.

There are regular trips and visits organised so students can find out more about working in the hair and beauty sector. These include events such as the Blackpool Hair Show, Salon International, London and the Professional Beauty Show, Manchester where students are able to sample new products and equipment.

Our hairdressing students take part in themed competitions, with industry professionals judging their creations. They also take part in professional workshops, charity events and benefit from the industry knowledge of guest speakers and trainers. The compulsory work placement provides valuable hands on experience.

The tutors have extensive industry experience and tutors have opened their own salons, been featured in magazines, cut and styled celebrities’ hair and won styling awards.

#### Level 1 Hairdressing and Beauty Therapy (Ambition)

##### One year

**Entry requirements** Minimum one GCSE at grade 3 (E), two GCSEs at grade 2 (F) and English and maths at grade 1 or completion of the Aspire course at Entry Level 3 and English and maths at grade 1.

**Progression** Level 2 courses such as Hairdressing, Beauty Therapy.

#### Level 2 Hairdressing Qualification

##### One year

**Entry requirements** Minimum one GCSE at grade 4 and two GCSEs at grade 3 (D), including English and maths or Level 1 Diploma in a related subject.

**Progression** Employment/Apprenticeship at Level 3.

Every applicant will need to have a course discussion and may need to provide a reference.

#### What will I study?

- Adding hair extensions
- Cutting and styling
- Day to day running of salon during extended work placement
- Drying and finishing hair
- Gaining experience in supervisory roles
- Hair colouring
- Infection control
- Perming
- Setting and dressing hair
- Shampooing and conditioning

#### Careers after the course

- Barber or Hair Stylist | £14,000-£30,000+
- If you go on to open your own salon, then these amounts can rise significantly.
- Session stylists | £500+ per day
- Specialist technician in colour or extensions | £20,000+

Get on course

### Bebiana Moreira

Level 2  
Hairdressing.

Previous School:  
Tarleton Academy.

“I have always wanted to be a hairdresser so this course was perfect for me. Doing the course has given me the essential knowledge needed to succeed in the industry and taught me how to work with people and customers’ which is essential in this job.

“I have also made some great friends on this course!

“The staff here are amazing, very supportive and make time for everyone and working in Concept Salon has been great.

“I have loved our practical sessions, especially colouring hair.

“I am now progressing to a Level 3 Apprenticeship and I’d like to open my own salon in the future.”

All Level 2 students benefit from an extended work placement, giving them a real industry experience.





## Hair & Beauty Competition

### A cut above

Hair & Beauty students at Southport College are given the opportunity to demonstrate their skills and express their creativity by taking part in our annual hair competition.

The students design a concept, within the guidelines of the competition theme, working on the hair, make-up and styling of their models.

Their innovative style creations are then judged by a panel of industry experts. The theme for 2020 was 'Emotions.' It was a fantastic event and all the entries were of a really high standard.

Get on course



FOR WOMEN  
CONCEPT  
FOR MEN





## Health & Social Care

If you are looking to pursue a career in nursing, social work, occupational therapy, midwifery or other health and social care role, then working in the health and social care sector can be both rewarding and fulfilling. The UK has both an ageing population and an increasing birth rate, which means that health and social care skills are going to be in demand for some time to come.

Our Health & Social Care courses are an ideal start. Our courses are vocational, so you will be putting your skills in to practice as you learn. The courses are designed to give you the skills employer are looking for and provide you with valuable experience in your chosen sector

### Why choose Southport College?

The health and social care team have close links with Southport and Ormskirk Hospital and Liverpool Women's Hospital, providing students with the opportunity to gain work experience within the NHS.

Our course tutors have vocational experience in the sector, including specialist roles in paediatrics, spinal injuries, vascular surgery, sexual health and midwifery. They pass on this wealth of knowledge to students in our state-of-the-art facilities.

We have a hospital ward simulation unit where you can benefit from many teaching resources including electronic beds, a pregnancy belly that simulates pregnancy and an ageing suit that simulates the process of growing old.

#### Level 1 Childcare (Ambition)

One year

**Entry requirements** Minimum one GCSE at grade 3 (E), two GCSEs at grade 2 (F) and English and maths at grade 1.

**Progression** Related Level 2 course with English and maths entry requirements achieved.

#### Level 2 Health & Social Care Diploma

One year

**Entry requirements** Minimum one GCSE at grade 4 and two GCSEs at grade 3 (D) including English and maths or Level 1 Diploma in a related subject and Level 1 Functional Skills in English and maths.

**Progression** Level 3 Health and Social Care, Childcare or other relevant qualification, Apprenticeship or employment.

#### Level 3 Health and Social Foundation Diploma Equivalent to 1.5 A-Levels (up to 84 UCAS points)

One year

**Entry requirements** Five GCSEs at grade 9-4 (A\*- C) including maths and/or English or pass/merit in a related Level 2 Extended Diploma and maths and/or English at Level 2. This course contains some externally assessed units.

**Progression** to year 2 or University to study nursing, occupational therapy, social work or other related courses or employment.

#### Level 3 Health & Social Care Extended Diploma Acorn Pathway Equivalent to three A-Levels (up to 168 UCAS points)

Two years

**Entry requirements** Minimum of five GCSEs at grade 9-4 (A\*- C) including English and maths and you will also need a second interview with NHS staff. This course contains some externally assessed units.

**Progression** University to study nursing, occupational therapy, social work, other related courses or employment.

#### What will I study?

- Anatomy and physiology (Level 2/Level 3)
- Creative activities (Level 2)
- Impact of diet/Nutrition (Level 2/Level 3)
- Lifespan development (Level 2/Level 3)
- Mental health awareness (Level 3)
- Supporting additional needs (Level 3)
- Working in health and social care (Level 3)

#### Careers after the course

- Care Assistant | £18,000
- Midwife | £22,000-£35,000
- Nurse | £22,000-£35,000
- Social Worker | £22,000-£40,000

**Every applicant will need to have a course discussion and may need to provide a reference.**



Regular work placements are arranged for students to develop their knowledge and skills.

Get on course

### Jade Radcliffe

Level 3  
Extended Diploma  
Health and Social Care  
Acorn Pathway.

Previous School:  
Tarleton Academy.

"I chose to come to Southport College because of the Acorn Pathway. There isn't any other course local to me with the opportunities available through this course.

"The opportunity to do hospital placements has been amazing; learning the skills needed to work in the industry, the confidence to work with real patients and gaining knowledge and skills from nurses in the job now has been invaluable.

"I originally wanted to be a midwife however working on the children's wards has inspired me to now go on to study paediatric nursing at Edgehill University.

"The BTEC route has been the best option for me. You are not sat in a classroom all day; you're getting work experience as well as learning the theory.

"The course has given me everything I need to progress into my chosen career."





## Hospitality

If you love the idea of running a hotel or restaurant, then our Hospitality course can be the first step towards your ideal job. Once you've completed your training, you can choose from a wide range of job roles and hospitality environments including conference and event centres, cruise ships, theme parks, tourist destinations and resorts as well as restaurants and hotels. The UK hospitality and catering sector is continuing to expand and although it is already a large employer, there is still a high demand for new workers with specialist skills.

### Why choose Southport College?

As a hospitality student, you will be based in the College's restaurant 'Clouds', preparing for work in the sector by serving paying clients.

You will organise and run themed nights in the restaurant such as James Bond, Alice in Wonderland and Murder on the Orient Express.

We have regular visits from professional barista and wine sommeliers who pass on their industry knowledge and skills to students through demonstrations and workshops. You will also undertake a 300 hour work placement.

#### Level 1 Introduction to the Hospitality Industry One year

**Entry requirements** Three GCSEs at grade 3 (E) and English and maths at grade 2 or equivalent.

**Progression** Level 2 Food and Beverage Service, Professional Cookery or Internship.

#### Level 2 Professional Food & Beverage Service One year

**Entry requirements** Minimum one GCSE at grade 4, and two GCSEs at grade 3 (D) including English and maths or Level 1 Diploma in a related subject and Level 1 Functional Skills in English and maths.

**Progression** Employment/Apprenticeship or Level 3 Supervision of Food & Beverage Service.

#### Level 3 Diploma Supervision of Food & Beverage Service Equivalent to A-Level (up to 32 UCAS points) One year

**Entry requirements** Pass at Level 2 in a related subject and a minimum grade 4 in English and/or maths.

**Progression** Employment or higher education course such as a HNC or HND.

**Every applicant will need to be interviewed for their chosen course and may need to provide a reference.**

#### What will I study?

- Barista skills and cocktail mixology
- Customer service
- Food and beverage service skills
- Food safety
- Menu knowledge
- Plan and host themed evenings
- Supervision of hospitality events
- Wine knowledge and bar service

#### Careers after the course

- Bartender | £16,000-£22,000
- Events Manager | £18,000-£39,000
- Hotel Manager | £22,000-£50,000
- Mixologist | £17,000-£20,000
- Restaurant Manager | £18,000-£40,000

Get on  
course

### Charlotte Mulhearn

Level 3  
Food and Beverage Service  
Supervision.

Previous School:  
St Michael's Catholic  
High School.

"I chose to come to Southport College as it was recommended to me as the best place to accommodate the support needs I have and I am really glad I came here.

"My course has been great and I have really enjoyed myself. It has given me the experience I need to progress. I want to set up my own business, travelling around the country catering for different events.

"The staff are great; if you ever need support they are there to help. They all want you to achieve the best that you can and the College is an excellent place to learn all the skills you need to succeed.

"I want to come back to Southport College to study the catering course so that I have an all-round knowledge of the industry before starting my business."





# Professional Cookery

Becoming a Professional Chef is a great career for anyone who loves food and enjoys cooking. From kitchen assistant, sous chef, chef de partie to head or executive chef, there are a wide range of job roles available for those qualified in Professional Cookery.

You could find yourself working in a hotel, restaurant, cruise ship, event venue, cafeteria or even a private home.

The UK hospitality and catering sector is continuing to expand and although it is already a large employer, there is still a high demand for new workers with specialist skills.

## Why choose Southport College?

As a professional cookery student you will develop your cooking skills using the latest equipment in our modern training kitchens and practice industry techniques to prepare food for paying clients in the College's restaurant 'Clouds.'

You will learn new trends and skills from regular guest chef demonstrations and contribute to the planning and development of menus for themed nights in our restaurant such as Medieval Banquets, Mad Hatters Tea Party, Into the Blue and Murder on the Orient Express.

### Level 1 Professional Cookery

One year

**Entry requirements** Three GCSEs at grade 3 (E) and English and maths at grade 2.

**Progression** Level 2 Professional Cookery, Food & Beverage Service or Apprenticeship.

### Level 2 Professional Cookery Level 2

One year

**Entry requirements** Minimum one GCSE at grade 4 and two GCSEs at grade 3 (D) including English and maths or Level 1 qualification in a related subject.

**Progression** Employment or Level 3 Professional Cookery, Hospitality or Apprenticeship.

### Level 3 Professional Cookery

One year

**Equivalent to A-Levels**

**Entry requirements** Pass at Level 2 in a related subject and a minimum grade 4 in English and/or maths.

**Progression** Employment or University.

### Level 3 Professional Patisserie & Confectionery Diploma

**Equivalent to A-Level (up to 32 UCAS points)**

One year

**Entry requirements** Pass at Level 2 in a related subject and a minimum grade 4 in English and/or maths.

**Progression** Employment or University.

Every applicant will need to have a course discussion and may need to provide a reference.

### What will I study?

- Demonstrations from chef lecturers
- Develop recipes and menus
- Event planning
- Learn how to run the kitchen
- Master the basics of food preparation
- Plan your own menus
- Prepare advanced dishes

### Careers after the course

- Baker | £20,000-£37,000
- Butcher | £12,000-£22,000
- Chef de Partie | £13,000-£25,000
- Head Chef | £23,000-£36,000

Get on course

## Charlie Stoner

Level 3

Professional Patisserie and Confectionery.

Previous School:  
Lathom High School

"I chose to do catering at Southport College because I had heard many good things about the course.

"I completed my Level 3 Patisserie and Confectionery this year.

"The course itself offered a variety of tasks to complete and I have really enjoyed designing menus for the restaurant. Knowing that I've come up with dishes and genuine customers are tasting them has been amazing! My all-time favourite part of the course has been learning how to use different types of sugar, such as pulled sugar to make roses and pouring sugar to make things such as my tennis rackets.

"Now I am going into a full-time job within a pastry section, becoming a pastry chef in a professional kitchen.

"I recommend this course as it teaches you so much and I have learnt many different techniques and skills which have helped to build my confidence in the kitchen."



Student benefit from an extended work placement across the year, giving real industry experience.





## Guest Chef nights

As part of their development, our Hospitality and Professional Cookery Students get to experience working with a variety of top professionals, as part of our Guest Chef programme within Clouds Restaurant.

A selection of top chefs from around the country take it in turns to join us and give our students an unforgettable experience and an opportunity to really learn from the best.

### Steven Doherty

Steven's career began as an 18 year old apprentice at the Savoy in 1976. His career at Le Gavroche began in 1978. He started off as a Commis Chef in the pastry section, finally ending up as Chef de Partie Tournant capable of being responsible for all sections.

Steven became the first ever British Head Chef of a Three Michelin Star establishment. Le Gavroche won every major European food accolade and maintained its three-star status.

In 1991 Steven became only the 5th chef to achieve the Master of Culinary Arts award, of which there are only 20 in the country to date.



### Malin De Silva

Born and raised in Sri Lanka, Malin learnt, from his mother, how to grow and cook his own food. Traditional Sri Lankan cuisine is engrained in his childhood memories.

Moving to the UK in 2010, Malin followed his passion for creating the finest cuisine and learning skills from some of the UK's top chefs.

After working in several restaurants in Southport, he has spent the last few years refining his skills at the four rosette, one Michelin starred restaurant 'Matt Worswick at The Latymer' and most recently restaurant 'Fraiche', a four rosette Michelin starred restaurant in the Wirral.

Now Malin is going back to his roots and reconnecting with his Sri Lankan heritage, creating a private dining experience based in Pembrookshire. His new dishes and tasting menus are inspired by the incredible flavours from around Asia.



### Jack Bond

Jack joined Southport College to help improve his skill set and knowledge of the industry that he knew he wanted to be a part of. Having known some great chefs had passed through Southport College, he was inspired to follow in their footsteps.

After completing his training at Southport College he went to London to pursue a career working for ex-Southport College student Marcus Wareing. He completed his week trial and Marcus offered him a job at 2-Michelin Starred The Berkeley. During his time in London he covered every section and position in all three of Marcus Wareing's restaurants.

To continue his professional development he went to New York where he worked with Daniel Humm at 3-Michelin Starred Eleven Madison Park, a New York city restaurant that received the award for 'world's best restaurant.' During his time working there he learnt many things about the industry, many of them echoing what he had been taught at Southport College. He is now back in London working at Davis & Brook Restaurant in Claridges.



Southport's best kept secret...



Get on course

## Tom Baxendale

Level 3  
Pro-cookery.

Previous School:  
Ormskirk High.

"I had heard really good things about the catering courses at Southport College and when I came to Open Evening I was really impressed. I have really enjoyed working as part of a team during the restaurant services; when the service goes well it's such a proud moment.

"Working in Clouds restaurant on a day to day basis gives students an amazing experience on how the industry works. The industry standard kitchens here are so good. They are really modern and up to date and make it really easy to transfer the skills you've learnt at College to real work.

"The staff are very knowledgeable and teach you everything you need to know and are really easy to get on with.

"The catering course at Southport College is one of the best courses around. It is hard work but very rewarding!

"If you want to work in the catering industry it will definitely get you to where you want to be."







## Clouds Restaurant

Southport's best kept secret...



Clouds is our fully working restaurant that gives Hospitality & Catering students the necessary work experience to be successful within the hospitality and catering industry.

The students will gain experience in how to run a restaurant and learn crucial event management skills. Clouds has state-of-the-art kitchens for our students to learn with the most up to date equipment.

**For opening times or to make a reservation  
call 01704 392676**



Get on  
course





# Motor Vehicle Engineering

Motor Vehicle Engineers and Technicians work on the maintenance and repair of all aspects of motor vehicles, performing preventative and restorative work on systems relating to the engine, transmission, electrical, braking, steering and suspension. They also carry out routine servicing, inspections, and when qualified the annual MOT testing of vehicles, advising customers on their condition, any faults found and repair options. They also need to have good transferable engineering type skills that enable them to repair broken parts and to problem-solve when removing and replacing components.

The UK automotive aftermarket contributes £12.2 billion each year to the economy, supporting 345,600 jobs and servicing more than 30 million vehicles each year. Our courses are designed to give you the skills and knowledge to gain employment within this expanding sector.

## Why choose Southport College?

Our Motor Vehicle department has benefited from a full refurbishment of the two fully equipped on-site garages, MOT stations and tyre fitting bays.

Our tutors all have industry experience, having worked in the motor vehicle trade for a number of years and so can pass on invaluable knowledge to students.

### Level 1 Light Vehicle Maintenance

One year

**Entry requirements** Three GCSEs at grade 3 (E) and English and maths at grade 2 or equivalent.

**Progression** Level 2 course in Vehicle Maintenance & Repair.

### Level 2 Vehicle Maintenance & Repair

One year

**Entry requirements** Full Level 1 Diploma in Vehicle Maintenance & Repair and English and maths at grade 3 (D).

**Progression** Level 3 course in Vehicle Maintenance & Repair or Apprenticeship.

### Level 3 Vehicle Maintenance & Repair

One year

**Equivalent to A-Levels**

**Entry requirements** Pass at Level 2 or equivalent in related subject and a minimum grade 4 in maths and/or English or equivalent.

**Progression** Employment or University.

**Every applicant will need to have a course discussion and may need to provide a reference.**

### What will I study?

- Basic servicing and valeting
- Engineering and fabrication techniques
- Engine units and components
- Fault diagnosis
- Fuel and air systems
- Health & Safety in the workplace
- Ignition systems
- Lubrication and cooling systems
- Replacing engine chassis units
- Transmission and driveline components
- Vehicle inspections
- Vehicle systems
- Working with others

### Careers after the course

- Automotive Engineer | £20,000-£50,000
- Breakdown Engineer | £13,000-£30,000
- Car Sales Executive | £15,000-£35,000
- Parts and Vehicle Service Reception | £16,000- £20,000
- Vehicle Mechanic | £19,000-£32,500

Get on course

## Scott McCowen

Level 3

Motor Vehicle.

Previous School:

Stanley High School.

"I chose Southport College as it is close to home and offered the course that I wanted to do.

"I have always been interested in vehicles and how they work and have always been fascinated by cars. The staff at College are fantastic and are really easy to get along with.

"The workshop is amazing. I can't think of anything that could be done to make it better! You learn so much on the course.

"I initially started on Level 1 and have progressed each year, building my knowledge and skills so that I can be the best I can be in the industry."

Students have the opportunity to work on up to 10 vehicles in the workshops using industry standard equipment, preparing them for real work environments. They also have access to the Autodata vehicle information system.



# Painting & Decorating

Although painting and decorating does include small-scale projects like house refurbishments, it is not limited to this. Oil rigs, bridges and steelwork all require protective coatings and hotels, bars, restaurants and stately homes all demand the ultimate decorating finesse. Demand for high-quality and qualified painting and decorating tradespeople is always going to exist and with TV and media coverage of the trade in shows such as 60 Minute Makeover and DIY SOS, the industry has seen an extra boost in jobs and projects.

## Why choose Southport College?

The College benefits from excellent facilities with a custom-built painting and decorating workshop.

Our tutors are all industry-experienced tradesmen with years' experience in the painting and decorating industry and students have access to the latest products and industry-standard equipment.

The department has strong links with local and global businesses such as Hamilton Acorn, Dulux and Graham & Brown with Hamilton Acorn sponsoring our nationally recognised Student of the Year award.

### Level 1 Painting & Decorating (Ambition)

#### One year

**Entry requirements** Minimum one GCSE at grade 3 (E), two GCSEs at grade 2 (F) and English and maths at grade 1 or completion of the Aspire course at Entry Level 3 and English and maths at grade 1.

**Progression** Level 2 related course.

### Level 2 Painting & Decorating

#### One year

**Entry requirements** Minimum one GCSE at grade 4 and two GCSEs at grade 3 (D) including English and maths or Level 1 qualification in a related subject.

**Progression** Employment.

**Every applicant will need to have a course discussion and may need to provide a reference.**

### What will I study?

- Applying paint by brush and roller
- Applying standard papers to walls and ceilings
- Erecting and dismantling access equipment and working platforms
- Health, Safety and welfare in construction
- Preparation of surfaces
- Specialist decorative finishes

### Careers after the course

- Freelance Painter/Decorators can earn about £140 a day
- Industrial Sprayer | £22,000-£33,000
- Interior Designer | £21,000-£43,000
- Painter and Decorator | (domestic or industrial) | £19,000-£30,000



The department has strong links with local and global businesses such as Hamilton Acorn, Dulux and Graham & Brown.

Get on course

## Adam Murdoch

Level 2  
Painting & Decorating.

Previous School:  
Ormskirk School.

"I came to an Open Evening at Southport College and really liked it. It was better than some of the other colleges I had looked at and getting a free bus pass was a big selling point!

"The Painting and Decorating course has been great.

"The tutors are really nice and approachable and have all worked in the industry and they are able to pass on all their skills and knowledge and the facilities are great. They have everything you need to complete the course.

"The tutors also helped me to get together equipment to set up my own decorating business and I hope to continue to grow this and become a successful sole trader.

"I have learnt everything I need to become a successful decorator."



## Performing Arts

Our courses are designed specifically to help those who wish to pursue a career as a professional performer. However, they also provide strong transferable skills that can be applied to a variety of careers and further education courses. These include confidence, communication, self-motivation, teamwork, time management and the ability to think creatively and independently.

Our performing arts team, as well as being fully trained teachers, also work in the industry as performers and are able to pass on their experience and advice to students.

### Why choose Southport College?

We have a fantastic purpose-built £2.5 million theatre with state-of-the-art facilities including dance studios, rehearsal studios, a 100+ seat theatre and recording studio.

The course is small, friendly and self-contained. Due to smaller class sizes you will receive more individual attention and great pastoral care from the performing arts team. You will study drama, dance and singing, which will prepare you for employment or further training in a competitive industry.

Our past students, as well as going on to successful performing careers, have secured roles in industries such as presenting, administration, writing, marketing and teaching positions.

#### Level 2 Performing Arts

##### One year

**Entry requirements** Minimum one GCSE at grade 4, two GCSEs at grade 3 (D), including English and maths or Level 1 Diploma in related subject and Level 1 English language and maths.

**Progression** Level 3 Performing Arts.

#### Level Performing Arts Extended Diploma

##### Equivalent to Three A-Levels

##### (up to 168 UCAS points) Two years

**Entry requirements** Five GCSEs at grade 9-4 (A\*- C) including English and/or maths or pass/merit in a related Level 2 Extended Certificate and English and maths at Level 2.

**Progression** HND in Performing Arts at Southport College, Employment, University or stage school to study dance, theatre, drama or other related subjects.

**Assessment** This course contains some externally assessed units.

**Every applicant will need to have a course discussion and may need to provide a reference.**

**You will also have an audition in which you will need to demonstrate potential in drama, dance and singing.**

#### What will I study?

- Acting to camera
- Business and the context of performing arts
- Choreography
- Dance
- Directing devised theatre
- Drama
- Full scale musicals/plays
- Opportunities in technical theatre
- Script analysis
- Singing

#### Careers after the course

- Acting dance or musical roles within theatre, film, TV or studio settings
- Choreography
- Composing and musical direction
- Directing
- General administration and ticketing
- Roles in education such as teaching, private tuition, drama or music therapy
- Scriptwriting
- Technical roles such as stage management, sound, lighting and camera operators
- TV, news, theatre and music production

Get on course

### Ben Mawdsley

Level 3  
Performing Arts  
Extended Diploma.

Previous School:  
Birkdale High School.

"I looked at a number of other colleges, however none of them offered what I wanted from a Performing Arts course. The course at Southport College is fantastic and will get you ready to go out and become successful in the industry.

"Getting on stage is amazing but doing all the preparation to plays (writing, staging, directing etc.) is great too and the productions never feel like low budget productions.

"Having the opportunity to get involved in such a broad variety of shows from musicals to straight plays allows you to develop so many different skills. The course also gives you a lot of technical knowledge and has really broadened my understanding and knowledge of performing.

"I have stayed at Southport College and progressed on to study the HND in Performing Arts and in the future would like to go on to be a voice actor on video games, animated films and TV shows."

Our performing arts team, as well as being fully trained teachers, also work in the industry as performers and are able to pass on their experience and advice to students.





## Performing Arts



Just a small sample of our many varied and exciting productions.

Get on course

### The Cherry Orchard by Anton Chekhov

In *The Cherry Orchard*, impoverished landowner Lyuba Ranevskaya and her family must choose to either sell off their land or raze their cherry orchard in order to pay Lyuba's mortgage. Lyuba's ultimate decision to sell the property destroys the dreams of her family members, who are then consigned to lives of servitude and regret.



### The Crucible

*The Crucible* is a fictionalised account of the Salem Witch trials of 1692, in which 19 innocent men and women were killed by hanging and hundreds convicted before the panic subsided.





## Plumbing

Plumbers fit and service hot and cold water systems, heating systems and drainage networks. Many plumbers are self-employed running their own businesses, while others may work for large plumbing or construction companies.

Our courses are intended for those wanting to gain the skills and knowledge necessary to enter the plumbing industry. You could further develop your skills with additional training in areas such as heating, ventilation and air-conditioning, and renewable energy technologies like solar powered heating.

### Why choose Southport College?

The College has excellent facilities with specially designed workshops where students can work independently or as part of a team.

All of our tutors are industry-experienced having worked as successful tradesmen for a number of years and they keep students updated on the latest industry developments.

Student projects and assignments are based on realistic working environments preparing them well for the world of work.

The department works with several local and national plumbing and heating companies.

#### Level 2 Plumbing

##### One year

**Entry requirements** Minimum one GCSE at grade 4 including Science and two GCSEs at grade 3 (D) including English and maths or Level 1 qualification in a related subject.

**Progression** Related Level 3 course or employment/Apprenticeship.

**Every applicant will need to have a course discussion and may need to provide a reference.**

#### What will I study?

- Above ground drainage
- Central heating systems
- Effective communication techniques
- Electrical Installation
- Fabrication techniques
- Health & Safety
- Hot and cold water systems
- Installation, repair and maintenance
- Pipework
- Plumbing science
- Rain water systems
- Renewable energy

#### Careers after the course

- Central Heating Engineer | £24,000-£34,000
- Gas Engineer | £18,000-£32,000
- Plumber | £21,000-£35,000

Get on course

### Chris Carnegie

Level 3 Plumbing.

Previous School: Ormskirk School.

"I chose to come to Southport College because it is close to home and also the plumbing course offered everything that I wanted. Speaking to the tutors at Open Evening really sold it to me; they are lovely and all have first-hand knowledge of the industry that they pass on to the students.

"The facilities here are great too; they give you a good knowledge and understanding of a real working environment in the plumbing industry.

"I have really enjoyed the practical learning on the course. I am a hands-on learner so this is the best way for me to learn rather than sitting in a classroom all day.

"I hope to progress onto an Apprenticeship to continue learning about the plumbing trade. In the future I want to go into the property industry."



Our Plumbing and Gas workshops have been completely refurbished creating fantastic state-of-the-art facilities for our students.





## Sport

If you have a passion for sport and fitness, we can help you take the next step towards a career in the sport and fitness sector.

Our sports courses provide you with the knowledge and skills to progress on to your chosen career whether you wish to be a sports coach, sports journalist, sports therapist or sports person in a particular discipline. Students have gone on to study for degree courses such as Sport Rehabilitation, Sports Coaching, Sports Therapy, Physical Education & School and Sport, Sports & Exercise Science.

### Why choose Southport College?

Southport College students have access to a range of facilities including the sports hall, fitness suite and dance studio as well as access to the 3G sports pitches at KGV College.

Our staff are all experts in their field with invaluable industry experience that they will pass on to you.

The team also have strong links with local sports-related organisations such as Everton FC, Southport FC and North West Soccer Schools.

Students run regular leadership activities including coaching sessions for school children and also visiting local fitness clubs such as Dunes Leisure Centre, Lakeside Leisure Centre, Chill Factor and Marine Lake.

#### Level 1 Sport (full-time Diploma)

One year

**Entry requirements** Minimum 3 GCSEs at grade 3 (E) and English and maths at grade 2.

**Progression** Level 2 or employment.

#### Level 2 Sport and Activity Leaders

One year

**Entry requirements** Minimum one GCSE at grade 4 and two GCSEs at grade 3 (D), including English and maths or Level 1 Diploma in a related subject and Level 1 Functional Skills in English and maths.

#### Level 3 Sport

This course is available at our partner college, King George V at: [www.kgv.ac.uk](http://www.kgv.ac.uk).

Every applicant will need to have a course discussion and may need to provide a reference.

\*Courses that require an element of working with children or vulnerable adults require students to undertake a compulsory Disclosure & Barring Service (DBS) check.

#### What will I study?

##### Level 1

- Assisting a leader of sports or active leisure activities to plan and deliver an activity
- Planning a healthy diet
- Planning own fitness programme
- Risks and hazards in sport and active leisure
- Taking part in exercise and fitness
- Taking part in Sport

##### Level 2

- Coaching sport
- Delivering a sports activity event
- Getting others active outdoors
- Leading sport and physical activity
- Leading sport safely and effectively

##### Careers after the course

- Nutritionist | £21,000-£34,000
- PE Teacher | £21,500-£35,000
- Sports Coach | £14,000-£35,000
- Sports Scientist | £18,000-£60,000
- Sports Therapist | £17,000-£35,000

Get on course

## Darion Moore

### Level 2 Sport

**Previous School:** Holy Family Catholic High School.

"The course at Southport College was the best course I had seen that met my requirements.

"I attended taster days here through my school and really liked the location and facilities of the College.

"I have really enjoyed all aspects of the course; practical and theory lessons. We are constantly learning about new and interesting topics such as how the body works and how to develop coaching skills. The course has taught me so many new skills in sport but it has also helped me to improve my confidence too.

"I am now at KGV College studying Sport Level 3 Extended Diploma.

I want to be a physiotherapist in the future."







# Sport - Enrichment



Whatever you are studying, Southport College has a wide range of sport and physical activities available for all our students.

Get on course



There are weekly sessions in sports such as badminton, 5-a-side football, short tennis, dodgeball, basketball, table tennis, yoga, running, walking, benchball and multisports, as well as competitions in short tennis, rounders, table tennis and football.

Plus there is the College Gym, which is free to students and open throughout the week.

The College also has representative teams in 11 a side football, volleyball, rugby union and basketball, and these teams compete on a regular basis throughout the year.

So whether you already play sport competitively, want to join one of our teams, or if you fancy trying something new, or you just want to join in and make new friends whilst you have fun and stay fit, our friendly, experienced and professional sports staff are here to help you.







## Travel & Tourism

Choosing a career in travel and tourism could see you travelling all over the world and there are many career paths and job roles available. Our courses are designed to help you develop the skills valued by employers in the sector, such as communication, customer service team working and the practical work and hands-on experience prepare you for your ideal job or further study at University.

Once you've completed your training you can choose from a wide range of jobs and travel and tourism environments including airlines and airports, travel agencies, conference and event centres, cruise ships, theme parks, tourist destinations and resorts, hotels and restaurants.

### Why choose Southport College?

Our tutors have industry experience including cabin crew, events, children's camps and business & retail travel. Plus our department has newly refurbished classrooms and also offers students a realistic working environment including a mock fuselage with real airline seats and equipment.

We have strong links with local businesses such as Tui, Premier Inn, Hayes Travel, Formby Hall and easyJet. Plus students enjoy regular visits to local hotels, as well as trips to venues such as the M&S Bank Arena, World Travel Market, Liverpool John Lennon Airport and J.A.R.E Cabin Crew training centre in Bournemouth.

There is a mandatory extended placement for our Level 2 and 3 courses, where students undertake valuable placements both one day a week and in blocks throughout the year.

#### Level 2 NCFE Extended Certificate in Travel & Tourism One year

**Endorsed by Hayes Travel, Northumberland National Park and Northumberland Tourism and Swissport. Students will be required to cover 2 mandatory units and 4 optional units.**

**Entry requirements** Minimum one GCSE at grade 4 and two GCSEs at grade 3 (D), including English and maths, or a Level 1 Diploma in related subject and Level 1 English language and maths.

**Progression** Employment in the travel and tourism industry or Level 3 Travel & Tourism.

#### Level 3 BTEC Travel & Tourism Extended Diploma Equivalent to Three A-Levels (up to 168 UCAS points) Two years

**Entry requirements** Five GCSEs at grade 9-4 (A\*- C) including English and maths, or pass/merit in a related Level 2 Extended Certificate and English and maths at Level 2.

**Progression** HND in International Travel and Tourism Management at Southport College University Centre or other University to study business, tourism, event management or other related subjects, or employment in the Travel or Tourism Industry.

#### What will I study?

- Airports, airline and travel agencies
- Customer service
- Long-haul destinations
- Retail and business travel operations
- The role of an overseas resort representative
- UK travel and tourism sector
- Worldwide and European holiday destinations

In the second year of the Level 3 course, you study an extra Level 2 certificate in Cabin Crew.

Endorsed by Swissport this gives an introduction to being a cabin crew member and an opportunity to acquire relevant practical and technical skills. It will develop your knowledge and understanding of the cabin crew role, as well as other airline safety and security, how to respond to emergencies on-board and even covers making inflight announcements.

#### Careers after the course

- Cabin Crew | £12,000-£25,000
- Events Management | £21,000-£40,000
- Hotel Manager | £19,000-£35,000
- Travel Agent | £13,000-£25,000

Get on course

### YuTeng Zheng

Level 3  
Travel & Tourism  
Extended Diploma.

Previous School:  
High school in Manchester.

"Southport College was recommended to me by friends as one of the best colleges.

"The quality of the courses are great so I decided to study here. I have really enjoyed the Travel and Tourism course; the different modules give you lots of knowledge of the industry. The tutors are really nice too. They have lots of knowledge of the subject because they have all worked in the industry and they are very supportive.

"We have been on lots of different trips on the course, Cabin Crew training in Bournemouth, Blackpool Pleasureland and Alton Towers but best of all, we went to Disneyland Paris!

"I couldn't fault the course; it's perfect!

"I am now at Salford University studying Tourism Management. I would love to work for an airport or Airline in the future within their marketing team."



Students enjoy a wide variety of trips to popular visitor attractions such as Alton Towers, Splashworld, Chester Zoo, Formby Pinewoods and Blackpool Pleasure Beach.





Get on  
course

## We're on course

At Southport College we welcome students of all abilities and with our wide range of courses and outstanding tailor made support packages we ensure that all our students have everything they need to achieve their dreams and ambitions.

We recognise that for some students starting college can be a daunting experience.

Our Connect, Aspire and Ambition programmes have been specifically designed to give these students the help, experiences and skills they need to progress on to the next level or into happy and successful employment.





## Connect

Both of our Connect courses are designed to give students the confidence and skills to progress on to Entry Level 3 Aspire and then one of our vocational courses as well as moving towards independent living or work experience through a supported internship.

Starting college can be a very daunting experience for many students on our Connect courses, so we take great care in ensuring that the transition from school to college goes as smoothly as possible. We offer group and individual orientation visits and taster days that take place before students come to College full-time in September. These visits help to introduce students to the College at their own pace and are tailor-made to suit them.

By offering the necessary support and guidance needed to help them to succeed, we ensure many of our students who start on our Connect courses progress through College to higher level courses and on to employment.

### Why choose Southport College?

There is dedicated classroom space for the Connect courses, with specialist resources and equipment.

We offer extensive support in the form of group and 1:1 support as well as lunchtime and break supervision.

We have a Transitions Suite in College for students to enjoy some quiet time during break and lunch times.

The College has been delivering courses for young people with LDD for many years.

As a College we are redeveloping our courses in line with the Government's latest curriculum initiatives.

#### Entry Level 2 Connect

##### Two years

**Entry requirements** Successful interview, assessment and taster session. Satisfactory reference.

**Progression** This course is designed to give you the confidence and skills to progress on to the Entry Level 3 Aspire course, or a supported internship or move towards independent living.

**Every applicant will need to have a course discussion and may need to provide a reference.**

#### What will I study?

##### The Two Year Connect Course

A Connect course is for learners who are working towards Entry Level 2. It is tailored to a student's individual needs and focuses on the transition to College from school as well as preparation for their next step. It consists of two 1 year courses dependant on the ability/achievement of students.

##### Year 1

The first year is focused on developing life skills such as managing money, being healthy, managing relationships and getting involved in enterprise schemes. Students will develop their independent travel and cookery skills and take part in confidence-building activities. Students will also continue to develop English and maths and have a progress tutor to prepare them for their next step.

##### Year 2

This year is determined by the student's progression route; they can study a qualification to prepare them for supported living or the workplace, or can continue to the next level of study. Students will also continue to work on improving their English and maths and have tutorials with their progress tutor. A student's second year options are dependent on ability and progression through the first year.

### Get on course

## Aaron Bishop

**Previous School:**  
Merefield School.

"I went to look at some other colleges but Southport College was the best!"

"I chose the Connect course to work on my English and maths and to also be more independent at home and I have really enjoyed it. I've most enjoyed doing lots of sports and practical tasks.

"The staff are nice and always help you and I've made lots of new friends."







## Aspire

The Aspire course is designed to help students progress towards the world of work and/or Level 1 vocational courses at the College. Aspire replaces our entry level courses and is a fantastic option for entry level learners. It allows you to try a range of different subjects before focusing on and progressing in one vocational area.

### Why choose Southport College?

We have realistic working environments with English and maths support combined with Industry-experienced tutors. You will also have a choice of vocational options to help you gain employability skills.

#### Entry Level 3 Aspire

##### One year

**Entry requirements** Successful interview and assessment.

You may also need to provide a satisfactory reference.

**Progression** Level 1 course/Supported internship.

**Every applicant will need to have a course discussion and may need to provide a reference.**

#### What will I study?

- Diploma in Further Learning & Personal Development which gets you ready for the world of work and helps you to become a more independent mature young adult both in learning and life.
- English and maths functional skills to help you achieve these important qualifications
- Progress sessions to ensure you are making good progress on the course

#### A series of subject tasters

- You can choose five from:
- Bricklaying
- Creative Design
- Hair & Beauty
- Health & Childcare
- Hospitality
- Motor Vehicle Engineering
- Painting & Decorating
- Professional Cookery
- Retail
- Sport

#### Careers after the course

- Successful students may be able to progress to a Level 1 course in their chosen vocational area or a supported internship.

Get on course

### Abbie McGill

**Previous School:**  
Greenbank High School.

"I chose to come to Southport College as it's close to my home and when I visited an open evening I really liked it.

"The Aspire course sounded really good too; I liked that you get to do tasters in lots of different subjects. The course has really improved my confidence and helped me to decide what I want to do in the future.

"I have now completed my Aspire course and I am staying on at Southport College to study Childcare."







## Ambition

### Level 1 Pathways

Our Level 1 pathway allows you to study in your chosen vocational area whilst further developing your English, maths and employability skills.

There are four Level 1 Ambition pathways, the courses take one year to complete and are an introduction to the subject you have chosen to study.

### Why choose Southport College?

We have realistic working environments with English and maths support combined with Industry-experienced tutors. You will also have a choice of vocational options to help you gain employability skills.

#### Ambition Level 1

##### One year

**Entry requirements** Minimum 1 GCSE at grade 3 (E), 2 GCSEs at grade 2 (F) and English and maths at grade 1 or completion of Aspire at Entry Level 3 and English and maths GCSE or equivalent at grade 1.

**Progression** Level 2 course, employment or Apprenticeship.

**Every applicant will need to have a course discussion and may need to provide a reference.**

#### What are the Ambition

##### Level 1 Pathways?

- Health and Social Care & Childcare
- Creative Design
- Hairdressing
- Painting & Decorating

#### What will I study?

- Maths & English
- Employability skills including:
  - Developing interpersonal skills
  - Healthy living
  - Preparation for work
  - Respecting equality and diversity in the workplace
  - Safeguarding online and in daily life
  - Teamwork skills

Students will also take part in a work placement related to their subject.

You will be in College three days per week until around week 10 when you will start your one day per week work placement. Work placement day is a compulsory part of your course.

#### What can I do after the course?

- Successful students may be able to progress to a Level 2 course in their chosen vocational area or a supported internship.

### Get on course

### Alex Hayes

**Previous School:** Greenbank High School.

"The tutors at Southport College are brilliant. They are really easy to get on with and have been really supportive and I've really enjoyed the Ambition course.

"I would recommend anyone to do it; even if it's not your first choice of course! It's really helped me to get to where I want to be in the future.

"I am staying at Southport College to study Travel and Tourism Level 2 and in the future would love to become a Flight Attendant."

You will be in College three days per week until around week 10 when you will start your one day per week work placement. Work placement day is a compulsory part of your course.







## Getting it right

**At Southport College we want to make sure we are getting things right.**

Our students are always encouraged to share their thoughts and ideas on College life, and their feedback on what works well and what they would like to see done differently is really valuable and always taken into consideration.

Parental opinion is also really important to us, so each year we ask the parents and guardians of our students to tell us what they think.

Here's what some of them had to say:

Get on course

### Aspire

"I have found staff at Southport College to be very friendly and approachable. They put everything into helping each individual student to achieve their personal best."

### Childcare

"My daughter was unhappy at high school but since being at Southport College she has built confidence, acquired friends and is now a happy teenager. Thank you."

### Computing

"We are delighted with all aspects of Southport College, in particular with the tutors. Our daughter has blossomed in confidence, enjoys the environment and is making super progress. We couldn't ask for more. Thank you everyone."

### Creative Media

"Since joining Southport College I have seen a dramatic difference in my son. He is so engaged with this course, he's made some great friends and he's just really happy and interested in what he's doing. His tutors have been a fantastic support and he really likes and respects them."

### Health & Social Care

"It has been a very well organised, smooth pathway for my daughter through her first year. No complaints from her so all must be good."

### Performing Arts

"My son has made great progress at Southport College, he is now more confident due to the encouragement and support of the staff. I'm a proud mum!"

### Plumbing

"My son has been treated with respect at Southport College – something which is very important to him. He has matured and grown in confidence. It's never been an issue getting him to attend. Brilliant job Southport College and all his tutors!"







## Getting to the College

The College is easily accessible by public transport and is very close to Southport town centre. (Morningson Road, Southport, PR9 0TT)

### By car

Southport is accessed via the A565 from both the north (Preston) and the south (Liverpool) and by the A570 (Ormskirk and the M58). The College is situated off Lord Street, on Morningson Road. Visitors attending our open evenings throughout the year are able to access free on-site parking. For Satnav: enter our postcode PR9 0TT.

### By train

A five-minute walk from the College, Southport station is accessible from all stations towards Liverpool and Hunts Cross through Merseyrail's Northern Line service. There are also Northern Rail trains linking the College to Burscough, Appley Bridge, Wigan and other stations towards Manchester.

### By bus

Buses from across the region stop regularly on Lord Street, a five-minute walk from the College.

**From Tarleton/Hesketh Bank:** 2X, 2

**From Ormskirk and Skelmersdale:**

375, 385

**From Maghull:** 300

**From Crosby:** X2

**From Bootle:** 300, X2

### By bike

If you wish to use your bicycle to travel to College there are secure bike storage facilities on-site.

### Travel pass

All full-time students\* who live more than 1 mile from the Southport campus on Morningson Road are eligible to apply for a free annual travel pass. The travel pass provides students with free term-time travel on Merseyrail, Arriva or Stagecoach networks.

\*Students aged 16-18 who live more than 3 miles away from the College are eligible for travel passes (or funds where necessary). Students who live 1 to 2.9 miles away from the College and are aged 16-18 are means-tested (to assess for eligibility) before passes are issued. Students aged 19 and over will be means-tested to assess for eligibility before passes are issued.

**Additional information is available on the application form or by contacting The Student Information Centre.**

### Further Information

Check out the public transport options from your area. [www.traveline.org.uk](http://www.traveline.org.uk) is a good place to start. Make sure you find out if your chosen public transport operator offers a student ticket or a regular user discount.

[www.arrivabus.co.uk](http://www.arrivabus.co.uk)

[www.merseyrail.org](http://www.merseyrail.org)

[www.stagecoachbus.com](http://www.stagecoachbus.com)

[www.merseytravel.gov.uk](http://www.merseytravel.gov.uk)



300 to Liverpool via Maghull  
315 to Ormskirk

375,385 via Ormskirk to Skelmersdale and Wigan





# Get on course

Southport College is committed to equality and diversity. The College is dedicated to the active pursuit of an equal opportunities policy which addresses the need and right of everyone in the College to be treated with respect and dignity, in an environment in which a diversity of backgrounds and experiences is valued.

If this publication is required in an alternative format or language, or you wish to discuss any other specific requirements or adjustments for joining one of our courses, please contact our Student Information Centre on 01704 392704.

Information is correct at the time of going to press. Every effort is made to ensure accuracy. The College reserves the right to withdraw or amend courses, entry requirements, fees and details included in this publication, or any other supporting publications or advertisements.

Courses are offered subject to viability of group size, minimum and maximum numbers, as defined by the College.

Acceptance on to a course is at the discretion of Southport College.

All Southport College students are subject to the College's policies and procedures. Other terms and conditions may apply. This publication, produced in October 2020, supersedes any other publication or advertisement promoting these courses. © Southport College 2020

